

Editorial

Dear Villagers,

Well, that was August! Some good weather, some bad - some lockdown easing, some being re-imposed.

One consistent thing is Contact! (Mainly because apart from a few dog walks, and clearing out the loft and garage - I have nothing else to do!).

Congratulations to all the Students who got their non-exam results. Fingers crossed you all got the outcome you wanted and if not, the whole thing was such a shambles, I'm sure everything will be rectified in due course.

Thankfully my youngest son got into his first choice university - only 3 weeks to go (counting - moi?!?!).

There are some more Thank You's, and Congratulations to Steve and Emily Cross on the early, but safe, arrival of their son, Zachary (see p21). I've also shared my recipe for Sticky Ginger Cake (p20) - Betty Goodge...

Lois

Contact is also regularly being published on-line now - <https://harlingtonvillagemagazine.org>

DISCLAIMER

Please note that Contact Magazine does not officially endorse any advertising material included in this publication

Our preferred typeface is Times New Roman for regular articles and notices. Submissions should be suitable for A5 format. Submissions may be abridged for space reasons and inclusion it at the discretion of the Editor/Management Team.

October copy by 12th Sept please.

**PROMPT PAYMENT OF
ADVERTISING INVOICES WOULD
BE GREATLY APPRECIATED**

CONTACT

Harlington Village Magazine

Editor

Lois Fowler 15 Park Leys, Harlington
LU5 6LY

e-mail and advertising
harlingtonvillagemagazine@yahoo.co.uk

Distribution

Lois Fowler / Sue Whittle

Postal Subscriptions

Betty Goodge
01525 873725

Treasurer

Sue Whittle
07887 708304

Contents

St Mary's Church Letter	4
Harlington WI	5
Flittabus Update	8
HPC Free Trees Scheme	8
Harlington Annual Village Show	9
Harlington Heritage Trust	9
Crafternoon Tea	10
HVH 100 Club	10
LiFE Church	11
Quotation	11
Messy Church	12
Jigsaw Library	12
HNH Update	13
Walking4Health	13
You're a Star! Feature	14
Harlington Hedgehogs	15
Harlington Society of Art & Crafts	17
Methodist Church Grand Book Sale	20
Sticky Ginger Cake Recipe	20
Methodist Chapel	21
New Baby	21
St Mary's Church & Warden's update	22
St Mary's Church Food Bank	23
Vacation not Staycation!	24
0-4 Club	25
HiB	25
Village Pub opening times	28

Advertisements



StotenGillam
chartered accountants
chartered tax advisers

Our aim is to provide an outstanding professional, cost effective and friendly service

- ✓ Established over 50 years
- ✓ Traditional values with forward thinking and modern technology
- ✓ Full range of business and personal accountancy and tax services
- ✓ Latest cloud software
- ✓ Free initial meeting



Tel: 01582 608601
99 High Street South,
Dunstable, LU6 3SF

Contact us today:
enquiries@stotengillam.co.uk
www.stotengillam.co.uk
f @stotengillam

Washing Machines Dryers - Dishwashers Repairs, Servicing & Sales



A local family business offering a quality service at a competitive price
Est. 1981



Tel: 01525 860148
Or Tim Downing direct on
07969 545 276

A member of the
White Goods Trade Association
Fully insured



GARAGE service x repair

My name is Jack Chauhan, I live in Harlington and own a family Garage in Luton
Beech Hill Garage (Est 1977) 110 Marsh Road Luton LU3 2NL

Tel 01582 504929/ 07860209098.

We repair/service **all makes and models** and no job is too big.

We have competitive rates and customer satisfaction is paramount to us.

I have customers who live in the village, who would happily provide a reference if requested.

I would appreciate it, if next time you want your car serviced/repared that you consider me.

I can pick-up/return your car/van from the village.

Advertisements

COMPSTON ENTERPRISES

Heating and Plumbing

Boiler Services, Complete Heating, Boiler Breakdowns,
Washing Machines plumbed in, Bathrooms, Leaks,
Electrical Re-wires, Extra Sockets, Alarm Systems etc. etc.

Contact David Compston 01525 873846.

Registered with CORGI and I.O.P.

ESTABLISHED OVER TWO DECADES.

Web: www.compston.net

E-mail: davidlcompston@compston.net



We'll get you up and running!

We offer the very best physiotherapy care from a friendly approachable team of nine highly trained Chartered Physiotherapists

All our practitioners are Chartered Physiotherapists and members of the Health Profession Council

We Have Moved Daytime, Evening and Saturday appointments available

We also offer...
Acupuncture, Reflexology, Pilates, Nutrition advice,
Food intolerance testing, Therapeutic Massage,
Massage, Reiki, Chinese Herbalist

Amphill & Flitwick Physiotherapy Clinic
T: 01525 720882 F: 01525 720886
www.chartered-physiotherapy.co.uk

NEW ADDRESS: 1 Kings Road, Flitwick MK45 1ED



Letter from St Mary's Church

Dear Friends,

'This is a time for lament.' So says the former Bishop of Durham, Tom Wright, and there certainly does seem to be so much to lament in the course of this pandemic which has afflicted us and those dear to us. The wide world has been affected and our smaller worlds have been changed, possibly forever.

This has been a time when we have had to admit that we do not have easy answers; it has been a time when we have been reduced, cut back, a time when we have been forced to consider what really matters in our lives. Introspection and fear have been apparent and there have been dark clouds on the landscape of our reality.

Against that canvas the call of Jesus' followers has been to confront their own doubts, and those of the world, through an understanding of Jesus and a trust in him, often, initially, very much from behind closed doors. But then beyond our confinement to be sign-producers for God's kingdom. Many heard the call.

We are to set up signposts – actions, symbols, not just words – which speak, like Jesus' signs, of new creation: of healing for the sick, of food for the hungry, of a listening ear for the lonely, a newspaper delivery for the cut off, songs of unity and appreciation for those who serve us - like the NHS, surprise gifts to those who need lifting, a meal to show we care, a grace that overflows from our hearts, and so on and so on... (insert your own example of a special grace expressed in these covid days).

Harlington has distinguished itself with care and compassion, in resolution and resilience, in stepping up and stepping out, in being there for others. The sense of community has been tangible and should be applauded.

Such beautiful and extravagant service to friend, neighbour and stranger requires the living presence of Jesus, and the powerful breath of his spirit. That is what we are promised when we step out in faith, sharing and loving. I hope you felt it in these recent months. May it continue as we move forward into uncharted waters.

Every blessing.

Nigel Washington

Joint Interim Minister

St Mary's Church

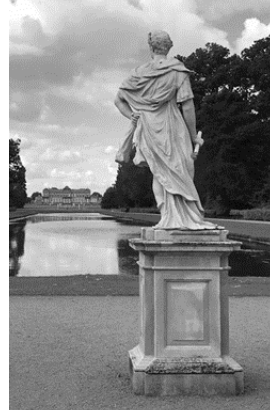
'Lord, when did we see you hungry and feed you, or thirsty and give you something to drink? When did we see you a stranger and invite you in, or needing clothes and clothe you? When did we see you sick or in prison and go to visit you?' The King will reply, 'Truly I tell you, whatever you did for one of the least of these brothers and sisters of mine, you did for me.'

Matthew. 25. 37-40

Even as more restrictions are lifting, we sadly still cannot resume our monthly meetings. We must ensure the safety of our members so, as soon as we are able to, we will be starting a new programme that fits in with the guidelines. We are really hoping we can get together soon.

Some of our members have been out and about locally and have recommended places to visit because they have felt safe. Yvette said that Wrest Park, Silsoe (*pictured right*) is well worth a visit. You have to pre-book online to walk round the gardens (the house is closed) and it's a lovely spot for a picnic.

Wendy recently visited Poplars Garden Centre and said how well organised it was with one-way traffic and social distancing and she felt very comfortable.



How are your WI dahlias growing from last year? They've really blossomed in the sunny weather and have needed lots of regular watering. (*pictured left*).

Recovering from my recent hip operation, I received a lovely present from my Danish family of an amazing jigsaw showing all the famous landmarks and buildings in London. (*right*) It's a real challenge and it's kept me very busy. All good practice if we have another Jigsaw Challenge!



In the meantime keep cool, take care and stay safe.

For further information please contact Lin Merrison on 01525 757161.

Advertisements

A&B SPORTS

Est over 30 years

**FOR ALL YOUR SPORTS TROPHIES,
CORPORATE AWARDS AND ENGRAVING**



**Based in Harlington and free delivery can
be arranged within the local area**

**Discount can be agreed on
acknowledgment of this advert**

Please contact

Steve 07947 032767

KP Sewing Repairs & Alterations Sewing by hand or machine

Fast & friendly service
Quick & convenient
Pick up & deliver
Harlington based



Contact Karen:



07930 443123



kpsewing@outlook.com

Zumba Fitness with Alicia

Zumba is a dance based exercise class.

Guaranteed to be lots of fun!

Join me at Harlington Village Hall &
feel the benefit to your mind and body!



ZUMBA

Zumba Gold (A low impact class suitable for all)
Tuesday Afternoons @ 2-2.50pm £4 per class

Zumba (High and low mix)
Wednesday Evenings @ 7.30-8.30pm £5 per class

Mobile - 07753107206

Advertisements

bacp

Registered Member
379415
MBACP

"Focus on
positive change
& well-being"

*Counselling for Adults and Young People
Based at Harlington Manor*

email: natasha@harlingtoncounselling.co.uk
telephone: 01525 591025
visit: www.harlingtoncounselling.co.uk



Harlington Counselling

T. R. P. Decorations

Partnership

Established 1997

**Local Trustworthy and
Reliable**

**Interior and Exterior
Decorating**

Carl: 07984357903

Lee: 07746093365

Email:

trpdecorations@aol.co.uk

VAT No. 690 4023 51



**HARLINGTON REARED
RARE BREED PORK & EGGS**

Dyers Hall Farm

Our pork is succulent,
flavoursome and will introduce
you to the fantastic flavour of
high welfare meat.

VISIT OUR WEBSITE OR
SOCIAL MEDIA TO FIND OUT
MORE OR TO PLACE AN
ORDER

WWW.DYERSHALLFARM.CO.UK



07760 135005

DYERS HALL FARM

DYERSHALLFARM@HOTMAIL.COM



Flittabus Services *plus* Free Trees Scheme



Update on the Flittabus services from Harlington

Thank you to everyone who contacted us with your views about the future of our two Harlington Flittabus services – to Milton Keynes monthly on Tuesdays, and to Ampthill and Flitwick weekly on a Thursday. All responses were fed back to the Flittabus Committee which met on Tuesday August 11th.

We have now heard that there are plans to get route **6B** up and running from early September - that is the bus that picks up from around the village and goes to Flitwick and Ampthill. This depends on taking ownership of a new bus fitted with a driver screen and having sufficient drivers to run the route.

We will provide more details when possible as there will likely be a few modifications to keep everyone safe.

Unfortunately the Milton Keynes route will need to wait for a bit longer – all three buses need to be Covid secure before they can run the MK routes.

Thanks on Behalf of Flittabus / HNH Suzan Whittle

Harlington Parish Council - Free Trees Scheme

Free Trees For A Greener Harlington



Harlington Parish Council in conjunction with the Woodland Trust has arranged for free trees to be distributed to village residents.

HPC will be receiving their “Urban pack” of 15 trees (crab apple, rowan, hazel) which has been put together to share amongst resident’s front gardens.

Any resident who would like a free tree are invited to either write to or email the Parish Clerk at clerk@harlington-pc.gov.uk.

All applications will be collected and the lucky recipients will be drawn at the October full council meeting.



Annual Village Show *plus* HHT

Harlington Village Show - Breaking news!

We now have an email address for you to send your garden and allotment photos to – whether of flowers, vegetables, fruit, cake, jam etc - we'd love to see them all. We'll put as many as we can on our Facebook page:

harlingtonvillageshow@gmail.com

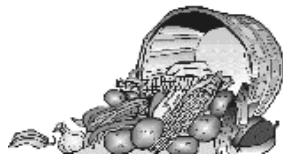
We really missed having our Show Day in August, especially when so many of you are growing for the first time, or experimenting with growing new things. We hope you'll all be inspired to keep going and growing, and perhaps enter the Show in 2021?

So, this year, instead of an actual Show, you can send in photos of your tallest sunflower, longest runner bean, biggest marrow, craziest vegetable or perhaps a perfect bloom. And the children can send photos of a drawing they've done recently, giving their age too. If we get some photos, we'll let you know whose bean, sunflower, marrow etc has "won", both in Contact and on our Facebook page. Happy snapping!

NB: Please could 2019 trophy winners return their trophies in September, to either Tricia or Judy.

Tricia 754241 / 07711 511729

HVS Committee



Harlington Heritage Trust

Due to Covid19 continuing, all remaining items on this year's HHT Programme, from September to December, will be cancelled. Hopefully, as the pandemic diminishes, we will be able to re-instate some of these events in 2021.

There will be no Programme Card with the December Newsletter but instead events for 2021, if we can go ahead at any time, will be listed in future editions of the Newsletter and in this Magazine.

All Memberships will now cover both 2020 and 2021; no fees will be charged for next year.

Quarterly Newsletters will continue to be distributed in the normal manner.

The Trust's AGM will be postponed until the Government advises that these kind of events can take place.

Take care everyone and keep well.

Barbara Thurston
HHT Secretary

Crafternoon Tea *plus* HVH 100 Club

Happy New Year!

Although technically Crafternoon Tea does not celebrate its birthday until later in September, we are about to start our fifth year of existence. In some ways, this seems a very short space of time, and in other ways, it seems like forever! We have made new friends, and got to know people better whom we have known for a long time. We have finished projects long started, started new projects, tried new crafts, made conversation and drunk tea together. We have even added a limited amount of computer skills, just so we can continue to meet!

Crafternoon Tea meets fortnightly on Monday afternoons, between 2 - 4 pm. If you want to join us – currently on Zoom – until we can go back into the building, please let me know and I will make sure you are included.

The church is working on how the building can be opened and used safely, but until then we will continue to use Zoom from home. Hopefully, by the time we go back into the building, we will have the internet available there, and can have both – the building, and Zoom for those who, for particular reasons, will not or cannot come back to the building just yet. So, whatever your situation, whatever your craft, we will have space for you. Or even if you just want to see some friendly faces, and have a chat.

Our **September** meetings will be **14th** and **28th**.

Have you ever thought of crocheting your own necklaces?

There are a lot of patterns which include beading, for trims for household items, as well as for jewellery.

Contact: Tina Salmon
(christinasalmon60@gmail.com), 874481,
website: <https://cliveandtina.co.uk>



HVH 100 Club

Dave Thew has just drawn the 100 Club. The winner for August is Dave Thew (!) of Oak Close with ticket number 105.

If you wish to be part of the 100 Club and have the chance to win £50, please contact our Treasurer, Dave Thew at hvhtreasurer@btinternet.com. The money raised each month helps to fund the upkeep of the Village Hall.

*Barbara Thurston, Secretary,
HVH Management Committee*

LiFE Church *plus* Quote



Loving God... Loving His people... Loving the world

As part of the Pioneer Network of churches we are able to link into our Midlands Area Hub Church in Loughborough to join in with their Sunday services at 10.30am & 4.30pm. You can find their website at: **open heaven.org**

We are continuing to keep in contact with each other through Zoom meetings. On a Wednesday at 7pm we have a catch up with each other and time for prayer.

Then on Sundays at 6pm we meet for worship and a bible based reflection. It is an interactive session in which everyone can share their thoughts and experiences.

Over the summer we plan to have some outside meet ups. If you would like to join in with any of these, have any prayer requests or would like to talk to someone please contact us at:

lifechurchcentralbeds@gmail.com

Advertisement *plus* Inspirational Quote


GARDENURSE
caring for your garden

Friendly and reliable Gardener based in Bedfordshire for regular garden maintenance or one off jobs. RHS Certificate, fully insured.

MOWING
DIGGING
PRUNING
WEEDING
PLANTING
HEDGE TRIMMING
CREATING NEW BEDS
TRAINING OVERGROWN AREAS



To discuss your garden needs or to find out more, contact Clare:

07870 415253

garden.nurse@outlook.com

www.gardennurse.co.uk



The

Best View

comes after the

Hardest Climb

Messy Church *plus* Jigsaw Library



We are not expecting to be able to hold Messy Church in September, but will continue at least with the same virtual approach we have used since lockdown. Hopefully it may be possible to develop this a bit further. If you signed up on our contact list then we will email material to you. If you haven't, then it's available on our website <https://cliveandtina.co.uk> and you can download it from there. Alternatively you can email me at clivedsalmon@aol.com.

In September our theme will be Harvest. We will look at Bible stories which relate to this.

In the very unlikely event that the lockdown no longer affects us, Messy Church meets in the Methodist Church and Halls on the 3rd Saturday each month from 4 to 6 pm.

This would be 19th September, but keep an eye on Facebook and our website.

Don't forget, while children need an adult, Messy Church is not just for children.

Clive



Harlington Jigsaw Library

Thank you to everyone who has recently donated new jigsaws to the library. I am busy cataloguing them, so just at the moment I am not taking any more donations. There are some new ones showing village life, seaside fun and a Wasgij puzzle, as well as some with larger pieces which may help if your eyesight or fingers are not as good as they used to be. Thank you to everyone who has sent photos of their finished jigsaw – I really enjoy celebrating with you! And it's always fascinating to hear the different views on the various puzzles - someone will really enjoy an historical one, others will find it boring! Some people enjoy flower puzzles, others prefer people... Finally, when returning your jigsaw, just let me know if there is a missing piece or any other problem. Thank you.

Just call/ text or email your request; approximate size, small or large pieces and I can then deliver to your home. You're welcome to collect if you prefer. (I hope, in time, that I will have a new home for them all, so that they're readily available and accessible).

If you'd like a different challenge, why not give one a go?

Tricia 07711 511729

tricia.murphy5@ntlworld.com.



HNH *plus* Walking4Health

(Working in partnership with the Bedfordshire Rural Communities Charity)

HNH Good Neighbour Scheme Update

We are hoping to start driving clients again from October, indeed a few of our driver volunteers are already prepared to take people to hospital appointments now.

Meanwhile, we continue to go shopping, drop off and collect prescriptions from local doctors and the pharmacies in Toddington, Barton and Flitwick, and do errands around the village including a bit of lawn mowing, paper bill paying, paperwork and help with IT.

We have purchased PPE for volunteers and clients when we do start driving to going to appointments again. If there are other things you think we should be doing do please let us know.



Help line:
07849 83541



Sue Whittle, HNH Co-ordinator

Walking4Health - Harlington

A safe way to stay fit, enjoy the village and meet fellow residents

Walk leaders tried out our first post-lockdown walk this month and we are re-introducing regular walks from September every second Friday as usual.

The dates are:

11th & 25th September and 9th, 16th and 30th October

We will start as usual from the Village Hall car park at 10.30am

Because of restrictions and also feedback from our walkers, the walks will now be a little different. We are only advertising them within Harlington, and offering two walks each time - a short 40 minute walk around the village only, and a longer, more strenuous walk on the footpaths over the fields surrounding the village. You can choose on the day.

There will be a maximum of 6 people per walk with at least one Walk Leader. We will be collecting contact details so we can advise of any changes/routes.

The Walking for Health Team

07887 708304



Thank you - You're a Star!

Tabor Close

We would like to thank Carole Murton, Julia Savage and Rosie Hughes for arranging a surprise celebration for our Golden Wedding Anniversary on the 6th June. All of Tabor Close were invited to sit in their front gardens and raise a glass to us on our special day. Thank you everyone for the champagne, cake, lovely gifts and large card signed by all!

Thank you also to our neighbours for helping us with our shopping during lockdown and while we have been shielding.

John and Suzanne Brandham

Neighbourhood Patrol

To everyone on the **Neighbourhood Patrol** and **Harlington's Watching** WhatsApp groups for looking out for everyone in the village – recently checking on houses where people were away and thought there may be intruders, checking on suspicious activities, and in one instance getting to a crime taking place within three minutes of posting! It goes a long way to making everyone feel safer knowing there is such a group of community spirited residents who are will to go out in all weathers at any time of day or night.

Suzan Whittle

Sanjeev and Sunita at The Shop

I'm sure most of the village would like to thank Sanjeev and Sunita for constantly going beyond the call of duty, not just during Lockdown, but for their 'business as usual' work ethic! Early morning starts, late evening deliveries, storing Food Bank items, providing not only shelter but seating too outside The Shop.

They are always polite - showing kindness and respect to young and old alike. They have followed the constantly changing rules when other shops did not, staying open when other neighbouring village shops closed. Sourcing specially requested items, and endless patience with phone calls, and still having time to be active participants in our Neighbourhood Watch.

If ever a medal was deserved for going above and beyond, these two would be at the top of the list!!!! Harlington is SO lucky to have them.

The Contact Magazine Team and HNH

HNH Volunteers

A HUGE thank you to all of the regular Harlington Neighbourhood Help volunteers and also the 40 or so villagers who volunteered during lockdown. We were very lucky as a village that we had so much help we did not have to call on you much, and still managed to help people in the surrounding areas. It says a lot for Harlington!

HNH Committee

Harlington Hedgehogs

Many of us have been enjoying the hot weather recently, sitting in the garden maybe with an ice-cream (or two!) but for hedgehogs and other wildlife, this hot weather can bring difficulties with food and access to water. With hedgehogs especially, the ground becomes very hard and dry making it difficult for them to find food in the soil. It is great to hear on the Harlington Hedgehog Facebook page that many of the 100 members are putting out additional food and water for them. Birdbaths are being filled providing much needed water for the birds.

I had been concerned that the building work at Station Yard could impact on the bats and owls in the area. Being unsure where they nest and concerned the disturbance would cause them to find alternative nesting grounds, I was pleased to see the bats out and about for the last week or so, enjoying the bugs at dusk.



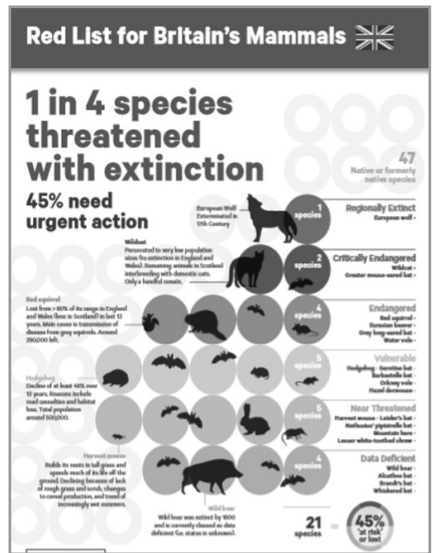
For a few weeks now I have heard an owl throughout the night. Originally, I thought this was the Barn Owl, seen in the field near Pilgrims Close/Park Leys but on researching owl calls, I now believe that it is a Tawny Owl. So, in the village, we have a Barn Owl, Tawny Owl and Little Owl. The Little Owl resides in The Bottoms area.

There have not been as many reported hedgehog sightings this year compared to last year BUT this does not mean the numbers have gone down. Now people are coming out more from being isolated from Covid19, the hogs may have decided to come out just that little bit later in the evening.

Although we do not like to hear that hedgehogs are in decline, some good news is that they have now been officially classified as vulnerable to extinction – they are on the Red List. This will help support those who are campaigning to protect the hedgehog and its habitat. It will help increase awareness of their decline and what needs to be done to support work to increase their numbers. It also means the Government have more power of enforcement with industries such as building developments, farming and transport to look at how they can be more hedgehog aware and change their practices to help protect this little, much loved creature. The next step is to increase the protection under the Wildlife and Countryside Act to move it to Schedule 5 – allowing the level of protection to be increased.

For now, we can be proud of what we are doing to help wildlife in Harlington.

Frances Mitchell





Clifford's
Country Grocers and Farm Shop

Opening on
Friday 28th August



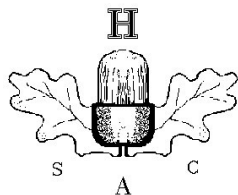
Visit us at:

Olde Watermill Shopping Village
Faldo Road, Barton-le-Clay, Beds MK45 4RF

www.cliffords.info

Email: **orders@cliffords.info**  **Facebook@Clifford's**

Harlington Society of Art & Crafts



I hope you are remaining healthy and safe, as some things are beginning to get back to a new normal i.e. no one way system in Tesco! Hooray!

However, I am afraid that Harlington Society of Arts & Crafts will not be meeting up anytime soon. The Village Hall is not open so therefore, there will be no Annual Exhibition & Sale in October this year. I have booked it for October 2021 when I hope the world will have sorted itself out.



In the meantime I hope that you are taking inspiration from things around you and continuing to create art & craft. If you feel inspired we would love to see the results on our Facebook group. You do not need to be a member of the society but you will need to join the group. Once Admin have approved your request to join you can then start sharing your beautiful art and craft.

Just make sure it is the one with the origami flowers at the top of the page.

Consequently, I have had to cancel our September artist which was to have been Sarah Janavicius on 17th September. Sarah trained as a graphic artist and uses colour very boldly and enthusiastically. She paints in watercolour and mixed media which includes collage. Her art is influenced by the time she spent living in Australia. The countryside and the creatures that live in it feature heavily in her varied artwork. So if you want to be inspired take a look at her extraordinary artwork on her website. Just search for Sarah Janavicius on the web.

Sarah has agreed to come and visit us next year.

Happy Art & Crafting

Julie Tyler (Chairperson)



Advertisements



WHITE & FENSOME

BUILDING CONTRACTORS



Tel: 01582 594766 Fax: 01582 594866
Mobile: 07860 967191 & 07899 806256

- PROPERTY MAINTENANCE
- DOUBLE GLAZING
- EXTENSIONS
- PLASTERING
- CARPENTRY
- FENCING
- ROOFING



RENRAL ROOFING

Felt & Asphalt Specialist

- Tiling
- Balconies
- Fascia and Guttering
- Re-pointing
- Repairs
- All roofing work carried out
- Free estimates
- Family firm, established over 20 years
- All work guaranteed
- Fully insured

Contact Andy on
Tel: 01525 630898
Mobile: 07866 319997

Advertisements

GARDEN SHEARS BY SHEARSMITH

GRAHAM SHEARSMITH
Your local gardener

07864 831513 / 01525 873040
grahamshearsmith@gmail.com

For a year-round neat & tidy garden

Yoga and Relaxation Classes

Harlington Village Hall

Thursdays 7.30 - 8.45pm

Mixed ability - beginners welcome

*Weekly classes also available in
Taddington and Flitwick*

Please see website for more details



Allison Proctor
Tel: 01525 713136
Mob: 07919 088341
info@flyingfroggyoga.co.uk
www.flyingfroggyoga.co.uk



Footcare By Elisa

Registered Foot Health Practitioner S.A.C. Dip. RFHP
07980 501546 • footcarebyelisa.co.uk

20% OFF with this
voucher

Foot Assessment	Ingrown Toe Nail
Nail Trimming	Hard Skin
Callus	Foot Massage
Corns	Add On Services
Verruca	Available

Non Chip Colour Gel Overlays
Organic Nail Polish

Foot Clinic located in Westoning
Home Visits available to surrounding villages

Terms and Conditions: Some treatments are subject to medical conditions and may have to be altered to suit.

Methodist Church Grand Book Sale *plus* Recipe

A number of people have asked if we will be running the book sale this year. We have to say that, although we have not yet made the formal decision (we have a Church Council just before the start of September which will consider all activities with regard to reopening the building), we do not believe that it will be possible to run the Annual Book Sale safely with regard to social distancing and other Covid-19 issues. This is a great disappointment to us all, but those of you who know the book sale will recognise the issues involved in collection, sorting, and particularly, on the day. Once measures can be relaxed, and we can run it safely, and in accordance with Church and Government regulations, we will look at when we can hold the sale again.

In the meantime, please think about our chosen charity, **Kids in Action**, who have been badly affected by the lock-down. We are going to continue with them as our charity for an extra year, in the hope that we will be able to raise funds next year. You might wish to consider giving a donation to them, either directly, or via the Methodist Church, or through Rosemary Barrett who volunteers with them in better times.



Clive and Tina

Sticky Ginger Cake

250g / 8oz SR Flour

1 tsp Ground Ginger (*I use 3)

125g / 4oz Demerara Sugar

175ml / 6 fl oz Golden Syrup

(*I use Treacle for a richer cake)

2 Eggs, lightly beaten

75ml / 2.5 fl oz Sunflower or Corn Oil

125ml / 4 fl oz Warm Water

90g / 3 oz Ginger Marmalade
or Conserve

Preheat Oven to 120°C / 250°F/Gas $1\frac{1}{2}$

1Kg / 2lb loaf tin, greased and lined (an 8inch round tin works as well)

Method

1. Sift the flour and ginger together into a bowl.
2. Add the sugar, syrup or treacle, eggs, oil, water and marmalade.
3. Beat together with an electric mixer until the mixture is pale and thick.
4. Pour the mixture into the prepared tin, place on a baking sheet and bake in the preheated oven for 2.25 hours or until a skewer inserted into the cake comes out clean.
5. Remove from the oven, turn out on to a wire rack and carefully peel of the lining paper. Leave to cool.

* *editor's comment*

Many thanks to Barbara Maher for the original recipe

Methodist Chapel *plus* A New Addition!

Opening a church again after lockdown turns out to be a complex activity, with rules from the Church and Government, which both change frequently and are obscure. In addition, we have had to look for a new cleaner, when cleaning is particularly important. We have to write risk assessments, and mitigation statements, and they need to be approved by our Church Council, as do the risk assessments of any others who use our premises. This has not happened at time of writing; we have a meeting planned for the end of August. It is also possible that things will change again, as the Government seeks to balance out the effects of reopening schools.



If we do open in September it is probable that we will still use Zoom for some time, either as the basis for our services, or to facilitate others joining. Technology has not worked well on live-streaming in the early part of August, but we will persevere. Check our YouTube channel, Harlington Methodist Church.

September preachers are:

- 6th Sept Come and See – Richard Armiger
- 13th Sept Ivor Mitchelmore
- 20th Sept Rev Nina Johnson – Pastoral Leaders Dedication Service
- 27th Sept United Service – Prayer Weekend (however that happens)

Our circulated material is available on <https://www.southbedsmethodist.org.uk>
If you want to join us, our service time is 10 am, with the link normally sent out the day before. Email me, clivedsalmon@aol.com, or phone 874481 to be added to the link email list.

Ladies Bright Hour is not yet meeting but are keeping in contact by phone.

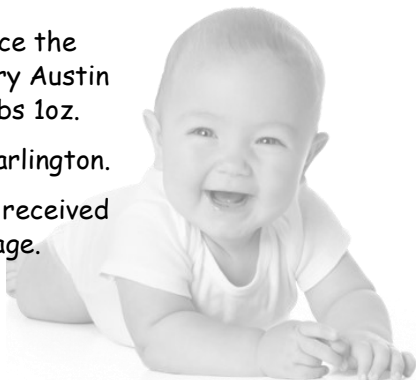
Congratulations!!!!

Steve and Laura Cross are proud to announce the early arrival of their first born son, Zachary Austin Cross on 1st August at 11.38pm weighing 5lbs 1oz.

He is enjoying settling into village life in Harlington.

Thank you for all the warm wishes we have received from our friends and neighbours in the village.

Steve & Laura



St. Mary's Church *plus* Church Warden update

Currently St Mary's services are at these times:

Sunday Morning 10.15am (outdoors) - in the event of poor weather the service will be held in church (with social distancing measures)

Wednesday Morning 10am (outdoors)

The pre-recorded service is released via the church website and church Facebook page each Sunday morning and can be accessed during the week.

Please check the Church website and Church notice board for further updates and information.



Update from St Mary's Church Warden

Bells: the bells should be ringing by the time you read this – if still silent we've either had a glitch, or the repairs have been delayed once again. Let's hope everything's gone well.



Churchyard: the Beds Wildlife Trust and a diocesan advisor came to see the churchyard and it was a fascinating afternoon. Searching more closely than usual, it's amazing how many different plants, grasses and flowers are there. I loved some of the names; mouse ear hawkweed (with mouse shaped leaves, soft and downy underneath), Burnett's saxifrage, Autumn hawkbit, Lady's bedstraw etc. Whilst we don't have anything particularly rare, they highlighted 2 plants in particular to "protect", and identified 2 small areas of grassland to manage from next April/ May. Those areas should be marked out by then, so you'll be able to see which parts we are "protecting".



Gift Day: September 12th. Letters explaining our annual appeal will be delivered to all the houses in the village. We shall be in the churchyard welcoming visitors between 10am-4pm, plus a display of the wild flowers being looked after, and ideas/plans for future work and development. Our next building project may be the weathervane and oak cross on the roof to the West. The cross needs attention, but if too badly eroded, sadly it may have to be taken down. We are getting advice on the best way forward. If you ever walk around the church you'll know that at least one other buttress, and other areas of masonry need repair fairly soon to keep us watertight. After all, she is a VERY old lady, almost 800 years old. It's a challenge keeping everything shipshape, but we go forward in faith!!

For information about services and other events, please visit our website www.harlingtonchurch.org, Facebook page, church noticeboard or please give me a call.

Best wishes,

Tricia. Churchwarden 07711 511729



St Mary Food Bank

St Mary's collect items for a Food Bank near Leighton Buzzard, and items can be left at The Shop with Sanjeev and Sunita. A huge THANK YOU to Sanjeev and Sunita for hosting the collection point, and to everyone who has supported the food bank already with very generous and kind donations. 113kgs of food-stuffs, toiletries etc have been donated in the past 2½ months!

The food bank cannot accept fresh food, or open packs, and are currently short of the following items.

Tinned: tomatoes, vegetables, meat, fish, fruit, custard, rice pudding.

Long life: milk.

Packets: sugar (preferably small), rice, noodles, instant mash.

Deodorants, baby milk formula and nappies. Cereals, coffee and essentials

Donated items are taken by Sandy and David to a centre just outside Leighton Buzzard and from there shared amongst various local food banks. One of which is at the Leighton Linslade Homeless Service (LLHS). They provide a safe shelter to people needing emergency night time accommodation and help and support to people to secure a permanent home - as well as distributing food packs.

Please check their website for updates on shortages: www.llhsblackhorse.org.uk
If you wish to make a regular donation or volunteer, please contact LLHS on 01525 382129.

Recycling of biscuit and cake wrappers

Help us to recycle via **Terracycle**:

- * Plastic and foil, savoury and sweet biscuit and cake wrappers (not cardboard)

Any make, whether shop own brand or named brand. Sweet biscuit wrappers eg digestives, or savoury such as Ryvita and Cheddars. Also any biscuit based bar wrappers - Twix, Kit Kat etc. Plastic and foil cake or cake bar wrappers - any make eg sponge cakes, tea cakes, mini rolls. If in doubt - just put it in. We cannot send chocolate bar wrappers or pouches which contained chocolates.

Please leave at 43 Barton Road by the front door in the plastic container, or in St Mary's church when open.

Please recycle crisp packets outside Westoning Village Hall or leave at 43 Barton Road and I can pass them on.

Thank you for your continued support.

Tricia 07711 511729



Vacation not Staycation!

Am I alone in being annoyed by the medias' use of "Staycation" to describe a holiday in the UK? As originally constructed, this ugly term referred to someone staying in their own home, possibly going for days out as a way to get more of a holiday feeling. But this year, probably because many people who would have holidayed abroad are staying in the UK, all UK based holidays are being described as "Staycations". Maybe it is that media people normally holiday abroad. Many of us holiday in our own country.

Having had to postpone our early summer walking holiday, we took our usual summer break, the one where we leave children and our own church behind, in Cornwall. We stay on the north coast, not too close to any major resorts. We like somewhere where we can walk to the beach, passing the queues of cars trying to park in expensive and overfull carparks on the way. This is great, as you can change for the beach, walk down, swim or body board, then, if the weather is not too good, walk back, shower and have a hot drink. In fact, fitting what you do to the tide and the weather is key to a good break.

An example. The morning weather was rather damp, but due to improve in the afternoon. We went for a walk in the morning, to see the inclined plane on the old Bude canal. As we ambled along the canal, we saw birds, later identified as swallows, skimming the canal, looking like they were drinking from it. One odd thing though - they were often flying into the reeds on the bank. As we drew level we could see five fledged chicks, with the parents feeding them. Having returned, in the dry, as the weather did clear up, we had lunch and walked to the beach. The state of the tide and the waves were just right for body boarding. An hour's swim, and we left the beach. Soon after, the mist came down, a typical sea mist. We'd had a great day.



On another walk, we saw a kestrel stoop, then return to hover as we walked practically underneath.

I don't mind people liking to go abroad. From a self-interest point of view it gives more space for the rest of us! But a holiday in the UK is not second best, it's just different. We may have weather, not a climate - you may have to take your chances. You need to pack for every eventuality - cold, hot,

wet and dry. But we love our UK holidays, missed our walking time, which would have been around Stratford-on-Avon (we use this holiday to see many different parts of the UK), and will continue to go away in the UK.

Clive Salmon

PS. We didn't get completely away from the local church this year as we attended the services via Zoom.

0-4 Club *plus* HiB



We look forward to welcoming you back as soon as possible

We hope you have all had a great summer and look forward to welcoming you back as soon as possible. Thank you for your continued support during this time.

Keep checking our Facebook and Instagram pages for update as to when we will be reopening.

See you soon!



HiB



Work party date: Saturday 26th September 10am, meet at the Village Hall. Bring gloves, (and trowel - if you have one). Do get in touch if you'd like to join us, or just come on the day.

Summer Award winners: we are delighted to announce our winners. Many congratulations to you all, and well done! With the many lovely gardens this year, it made the judges task all the more challenging.

Front Garden : 18 Glebe Gardens

Hanging baskets / Containers: 60 Sundon Road

Low Maintenance Garden: 5 Wentworth Court

Allotments: Plot 15

Commercial Building: The Shop (Harlington Newsagents)

Public Building: Parish Hall

Autumn Planting: It seems odd to be talking about Autumn planting when I am writing in a heatwave, but we hope to be planting out wallflowers etc at the beginning of October - date tbc. We hope you've enjoyed the Summer flowers this year.

If you'd like to volunteer to water, weed or maintain HiB planting around the village, please contact Ian on 874720 or Tricia 07711 511729.

HiB Committee

Advertisements



- Accountants who know how businesses run
- Qualified Chartered Accountant and Chartered Tax Advisor
- Friendly Accountants who listen to your needs
- A wide range of services offered

Call 01525 552250 for a FREE initial meeting

- ✉ oliver@savageaccountants.co.uk
- ✉ julia@savageaccountants.co.uk
- 🌐 www.savageaccountants.co.uk



Company Registration Number: 09214570
Cure your tax headaches



We help you prepare for the choices you have to make.
NEVILLE. Because there is a difference.

AMPTHILL

The Old Church, Flitwick Road
MK45 2NT

t: 01525 406132

e: amphill@nevillefuneralservice.com

LUTON

Neville House, Marsh Road,
Leagrave LU3 2RZ

t: 01582 490005

e: luton@nevillefuneralservice.com



www.nevillefuneralservice.com

Advertisements

Kinsbridge

Plumbing Heating Gas
and Electrical Engineers

All Plumbing, Heating, Gas and Electrical work undertaken .
Boilers , Radiators , Underfloor Heating Systems . Unvented Hot water systems , LPG
Power Flushing (to remove heating system sludge) Full rewires, Consumer unit upgrades
Kitchens and Bathrooms (complete install , supplied and fitted) Landlords Certificates

Mobile: 07973842037

Web: www.kinsbridge.co.uk

Office : 01525 600024

Email: info@kinsbridge.co.uk

Proud members of
Checkatrade.com
Where reputation matters



551729



James

Plumbing & Heating

Local, reliable and quality service

-  Boiler servicing
-  Landlord Certificates
-  Boiler and central heating installation
-  Heating breakdowns
-  Heating and boiler upgrades
-  Radiator replacement or relocation
-  General plumbing work

Call for a free no obligation quote.

Mob: 07970 275358

Tel: 01582 882245

Email: danieljames5@outlook.com



Nessfit

Classes taught in
Harlington Village Hall

Monday Pilates 715 & 830pm
Tuesday WeightBox 915am
Wednesday  815pm
Thursdays Pilates 11am
Personal Training available

Contact Ness 07732412247

or email

Nessfit21@gmail.com

Village Pubs - Opening Times

The Old Sun



Mon-Thurs 1pm-11pm
 Fri - Sat Midday-12pm
 Sunday Midday-10.30pm



Tracey & Mark look forward to welcoming you...

The CARPENTERS Arms



NEW DRINKING HOURS
 MONDAY TO WEDNESDAY 4-10^{PM}
 THURSDAY 4:00^{PM} - 10:30^{PM}
 FRIDAY AND SATURDAY 12^{NOON} - 11:00^{PM}
 SUNDAY 12^{NOON} - 7:00^{PM}

FOOD BEING SERVED
 TUESDAY 6:30 - 8:30^{PM}
 WEDNESDAY 6:30 - 8:30^{PM}
 THURSDAY 6:30 - 8:30^{PM}
 FRIDAY AND SATURDAY 12^{NOON} - 3:00^{PM}
 AND 5:00^{PM} - 8:30^{PM}
 SUNDAY 12^{NOON} - 3:30^{PM}

FOOD DELIVERY - HARLINGTON!
 ONLY.
 079 555 99706
 TUESDAY TO SATURDAY 5:30 - 7:30
 SUNDAY 12:30 - 3:30^{PM}

