

Editorial

Dear Villagers,

The month of August is not far away, when nothing happens and there is space to re-issue the directory. I will incorporate the amendments noted so far, but please let me know of any other changes or new inclusions. Please don't wait till it's printed again to tell me about something wrong.

Summer is coming. Do join in summer events.

On that subject, while it is dry we like to be able to let children play outside. Please clear up dogs' mess. I recently saw an older lady, with a walking frame, taking her dog for a walk. She managed to clear up the mess, so why can't more able folk? Bury Orchard is a play area. When I want to take children to play on it I shouldn't have to clean up first.

Enough complaining. Enjoy the summer weather when we have it.

Clive.

DISCLAIMER

Please note that Contact Magazine does not officially endorse any advertising material included in this publication

Our preferred typeface is Times New Roman for regular articles and notices. Submissions should be suitable for A5 format. Submissions may be abridged for space reasons and inclusion is at the discretion of the Editor/Management Team.

July2024 copy by 10th June please.

**PROMPT PAYMENT OF
ADVERTISING INVOICES WOULD
BE GREATLY APPRECIATED**

CONTACT

Harlington Village Magazine

Editor

Clive Salmon

01525 874481

e-mail and advertising

harlingtonvillagemagazine@yahoo.co.uk

Distribution

Debbie Miles

Postal Subscriptions

Betty Goodge

01525 873725

Treasurer

Sue Whittle

07887 708304

Contents

Letter from the Life Church	4
Douglas Hillyard	5
Brain Tumour Research	6
Harlington Village Show	7
Sundon Medical/Harlington Surgery	8
Flittabus	10
Crafternoon Tea	11
Harlington Ramblers Walks	11
Harlington Gardeners' Society	13
Harlington Village Hall 100 Club	13
Dunstable Downs Open Air Service	13
Harlington in Bloom	14
Harlington Lower School	16
Harlington Hedgehogs	16
Harlington Lower School Summer Fair	17
Flit Vale Wildlife Group	18
Messy Church News	21
Life Church	22
Baby and Me	22
Methodist Church	23
St. Mary's Churchwarden	24
St. Mary's Church Services	25
Village Diary	28
Wednesday Coffee Mornings	28

Contact is also published on-line -
<https://harlingtonvillagemagazine.org>

Advertisements



We help you prepare for the choices you have to make.
NEVILLE. Because there is a difference.

AMPTHILL

The Old Church, Flitwick Road
MK45 2NT

t: 01525 406132

e: amphill@nevillefuneralservice.com

LUTON

Neville House, Marsh Road,
Leagrave LU3 2RZ

t: 01582 490005

e: luton@nevillefuneralservice.com



www.nevillefuneralservice.com



GARAGE

service x repair

My name is Jack Chauhan, I live in Harlington and own a family Garage in Luton
Beech Hill Garage (Est 1977) 110 Marsh Road Luton LU3 2NL

Tel 01582 504929/ 07860209098.

We repair/service **all makes and models** and no job is too big.

We have competitive rates and customer satisfaction is paramount to us.

I have customers who live in the village, who would happily provide a reference
if requested.

I would appreciate it, if next time you want your car serviced/repared that you
consider me.

I can pick-up/return your car/van from the village.

Advertisements



IRONING | LAUNDRY | ALTERATIONS | REPAIRS

Your Harlington Laundry and Ironing Service.

Washing and/or ironing, alterations, repairs, wedding dress cleaning, curtains, duvets, blankets mattress toppers and throws. Curtain linings changed


Private and business customers welcome.

Monday to Friday - 9am to 6pm
Saturday - 9am to 5pm


Please pop in or we can pick up and deliver to you.

2 Lincoln Way , Harlington, LU56NA 01525
875980 | 0745 9906412

DAVID JAMES



WWW.DAVIDJAMESKITCHENS.CO.UK



MANUFACTURE DESIGN INSTALLATION

We are a local manufacturer of beautiful kitchens. We sell direct to save you money. The factory showroom has an extensive display of different styles.

SAVINGS ON ALL KITCHENS
& Up To 25% Off Top Brand Appliances

01525 722230 PULLOXHILL BEDS MK45 5EU



StotenGillam
chartered accountants
chartered tax advisers

Providing an outstanding professional, cost effective and friendly service to our business and personal clients.

OUR SERVICES

-  Taxation
Pay the minimum tax
-  Compliance
Business administration
-  Support
Grow your business
-  Start-ups
Your business a reality
-  Get to know you
Consultancy & advice

Call now for a free initial consultation
01582 608601

📞 01582 608601 ✉ enquiries@stotengillam.co.uk
www.stotengillam.co.uk
Alban House, 99 High Street South, Dunstable, LU6 3SF

Washing Machines
Dryers - Dishwashers
Repairs, Servicing & Sales



A local family business offering a quality service at a competitive price
Est. 1981



Tel: 01525 860148
Or Tim Downing direct on 07969 545 276

A member of the
White Goods Trade Association
Fully insured

Letter from the Life Church

On Wednesday night Pete and I sit together and enjoy watching the tv programme called Race Across the World. Teams of two are given a limited amount of money and a map and told to head to different check points that are revealed as they journey through various countries to an end goal. They have no phone or way to search the internet to help on the journey and have to rely on communicating with people who often don't speak English. They are often faced with having to use "interesting" forms of transport. We debate who is going to win and how they are managing their money, will they need to stop and earn a bit of extra cash along the route due to paying for an expensive taxi or train? The amazing places they visit such as Japan, Thailand, Cambodia and South Korea all have different terrains, rice fields, mountains, rivers, small remote villages to large bustling cities, not forgetting they all have different cultures. What an experience! It's intriguing how the relationships within the teams are tested as they experience different challenges along the way.

It reminds me of our journey through life, where we experience many highs and lows. We go through different seasons and challenges but we all have a start and end point. Our resources change and we do not know when the end point will come. The team around us changes during this time, our parents, friends, work colleagues, children, grandchildren and partners to name a few but I have discovered that the only stable and certain thing in my life is God. He is always there and never changes. He promises me in his word, the Bible, that he will always be there with me and that he is the same yesterday today and forever.

What and whom do you rely on when life becomes difficult? We all have challenging times. Over the past few months as a family things have been tough and all we could do was fix our eyes on God and trust him. My relationship with him has comforted and reassured me at every step along the way.

Psalm 23 reassures us that even when I walk through the darkest valley, I will fear no evil, for you (God) is with me your rod and staff to comfort me. It declares at the end 'surely your goodness and love will follow me all the days of my life'

When you read this letter the programme will be finished and it will be known which team is has reached the last checkpoint first. Pete and I will be cheering them on until they cross the finish line. We don't know what our journey will be like but we do know who holds us in his hands.

Love and prayers

Carol Gibbs

Life Church Harlington

In memory of Douglas Hillyard - 1930 to 2024



My parents moved to Westoning Road in Harlington in the early 1960s. Although Dad was not an active member in the village at this time, I do remember us all going camping to Sheringham as part of a church week and him helping teach the Guides about camping. He was working full time, as a material controller at English Electric and later as a school teacher in Flitwick, so didn't have much spare time for village life.

It wasn't until 1980, when Douglas and Angela moved to The Harlington Arms in Station Road, that he became one of the village 'characters'. It had ceased to be a pub some time before. What attracted Dad to the house were the numerous outbuildings, the stables, and 3 coach houses, now garages. He converted the stables to a pottery showroom and studio, and built a huge kiln in the furthest outbuilding.

His 2 passions in life were botany/horticulture and pottery. The house didn't have much garden, but that didn't bother him as this was before Oak Close was built, and the land behind the house was wasteland. He rented it from The Carpenters Arms and turned it into a huge vegetable plot. Between his pottery and garden, I think this was the happiest time of his life.

As he was no longer working full time he began to take an active role in village life. He joined the Arts and Crafts Society and always entered the annual competition with an unusual interpretation of the set theme. I have a marvellous model of the Pagoda at Kew Gardens he made one year. I'm not sure he ever won as he would often complain that the judges were biased towards painters.

Once the plot he cultivated was sold for building on he rented an allotment and was a keen member of the Garden Society, thoroughly enjoying the annual Flower and Vegetable Show. He often won categories in this, several times taking home the overall winner's cup. He was extremely knowledgeable about wild flowers and led walks showing the villagers the locations of orchids and other rare plants.

When he retired from the pottery he joined the Parish Paths Partnership, which was a group of volunteers responsible for the upkeep of the local footpaths and bridleways, cutting back nettles and brambles, and installing stiles and bridges. Even when he could no longer do these physical activities he continued to attend the Wednesday morning club in the parish hall, playing table tennis and shove ha'penny.

Melanie Ferris

Brain Tumour Research



5th month of the year, where is it going to!



I feel like I am motoring now. An amazing £344.02 has been raised this year in plants and sundries from outside my house so far. A special thank you to Beryl who donated some super ceramic pots which have nearly all been bought now, gone to new homes and I know will be loved and filled with seasonal plants and the joy goes on with the donations for these passed onto the charity. Thank you Beryl for sharing.

Elliot has begun his community support for his bronze Duke of Edinburgh award helping with the charity plants. He arrived on the last Sunday of April on a very wet and cold day planning to water my plants but instead helped me to plant on some costituto tomatoes and cosmos he did an amazing job, see the photo.



Elliot was very enthusiastic and cheerful despite the weather and left 2 hours later saying how much he had enjoyed gardening, how relaxed it made him feel and was already looking forward to the next week and asking what we would be doing. This has spurred me on so that I have potted on some marigolds, set up a grow house for those who would like tomatoes and geraniums early and take on the responsibility of growing them on. I have washed pots and trays, fetched more tomato plants and sunflowers from a fellow grower and supporter in Luton as well as stocking up on compost. I have dug up some snowdrop bulbs, pulmonaria, phlomis and other wanted and requested plants from my garden. I'm feeling fired up and enjoying talking to supporters when they visit to see what is available. I met a fellow allotmenteer a couple of weeks ago and having introduced myself, he then proceeded to show me the wallflowers and perennial geranium he had bought from outside my home and was delighted with, and then asked what vegetables I was growing and promised he would be visiting to buy tomatoes and courgettes etc.

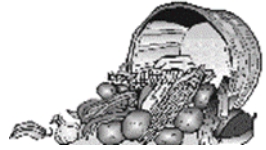
I will begin to put flowering plants: cosmos, pasque flower, marigolds, sunflowers, geraniums, zinnias, sweet peas out in a growhouse during May. There will also be vegetables: tomatoes: tumbling Tom, moneymaker, gardeners delight, marmande, costaluto (beefeater), and Shirley and any other donated varieties, leeks, cabbage, cucumbers, cucumber, courgettes. Please do visit and support.

Finally a heartwarming story to finish on: a family who support regularly, visiting at least once a week, it would seem delighted in telling me an apple tree they had bought from me was flowering and how excited they were looking

Harlington Village Show & BTR *ctd.*

38th Harlington Village Show

Saturday 24th August 2024



Please could any 2023 winners return their trophies by July 31st at the latest

The schedules should be with you all soon at the end of June, beginning of July, and that gives plenty of time to be creative, take photos, bake cakes etc. Hopefully your vegetables and flowers are already in the garden or in planters, getting ready to 'bloom'.

If you're thinking about entering, exhibits you've grown will rarely be perfect, but getting them to match in shape and size is important and they should be as clean & blemish free as possible. However, fruit should not be 'polished', and apples are displayed with their stalks downwards. There is more advice in the schedule about how to display your fruit, veg and flowers, so take a look beforehand. Show rules & the class description will give you the number, size or weight required for any exhibit and you need to follow these rules. An entry form will be delivered with the schedule. Once you've submitted an entry form, you then bring your exhibits to the Village Hall on Saturday 24th from 8.30 – 10.45am. Show stewards will be there to greet you and give you help and advice.

Visit our Facebook page or Instagram to see example photos of the classes.

We are now finalising Show Day itself, who does what and when! We'd love some extra person power for setting up and taking down the tables etc. We set up the evening before, meeting on Friday 23rd August from 7.30pm at the Village Hall and need to move tables from various places by car to the Hall, then do it all in reverse on Saturday afternoon. Contact us via harlingtonvillageshow@gmail.com if you can help in any way.

HVS Committee

Brain Tumour Research *ctd.*

forward to their first apple! Encouraged by this and excited by their garden successes, they have already bought their tomato and geranium plants. So don't delay or be disappointed, come and make a donation for a plant and see your garden flourish, enjoy produce you have grown on your dinner plate and in so doing support Brain Tumour Research.

Many thanks Jane and Emma Barltrop and Alice Sulaj

Sundon Medical Centre/Harlington Surgery



Sundon
Medical centre

First, I would like to introduce myself. My name is **Deanna Chesham** and I have worked at the Sundon Medical Centre for nearly six years; the first four as receptionist and the latter two as administrator.

You will see me now and again at Harlington as I pop over to cover when Karen goes away on holiday.

GP and Nurse Appointments

As you will be aware the patient demand for appointments is extremely high. Therefore waiting times can be long. So instead of waiting on the phone, you can use the online consultation forms under the heading of Appointments on the SMC website: [SundonMedicalCentre.nhs.uk](https://www.SundonMedicalCentre.nhs.uk)

These consultation forms will be read by a team member within two working days. You will see that the website has been completely refreshed and updated and is easy to navigate.

Repeat Prescriptions

When putting in repeat prescriptions, can we please request that your prescription repeat forms are put in early as some types of medication, even the more common ones, can be difficult to get due to worldwide shortages; it can often take more than the four days to obtain the medication that you need.

You can also generate repeat requests via the SMC website (web address above) or the NHS website: nhsapp.service.nhs.uk/login

Please allow extra time for Christmas, Bank Holidays, weekends, and your own holidays if going away.

Think pharmacy first

There isn't always a need for a GP appointment for minor health concerns. We can refer you directly to a community pharmacy for a consultation to assess your needs. Pharmacists are highly trained healthcare professionals, with five years training, and they spend a high percentage of their time helping patients with symptoms such as yours.

For more details, go to:

www.nhs.uk/nhs-services/pharmacies/how-pharmacies-can-help

Pharmacist services

The charts on the next page show how pharmacists can help and give a list of the ailments that pharmacists can typically handle.

Please speak to your receptionist who will put the referral through for you.

Sundon Medical Centre/Harlington Surgery *Ctd.*

Advice from a pharmacist after contacting NHS 111 or a GP	Get help from a pharmacist about newly prescribed medicines
Free blood pressure check	Cholesterol and blood sugar testing
Substance misuse	Needle and syringe exchange
Weight management	Disposal of old medicines
Emergency contraception	Chlamydia screening and treatment
Advice and help on stopping smoking	Flu and Covid vaccinations

Bee / Wasp Sting	Stings with minor redness	Stings with minor swelling
Cold Sores, Coughs	Flu like symptoms	Sore throat
Blocked / runny nose	Constant need to clear the throat	Excess mucus Hay fever
Earache	Blocked ear Ear wax	Hearing problems
Conjunctivitis Dry/sore tired eyes Eye, red or Irritable	Eye sticky Eyelid problems	Watery / runny eyes
Constipation Diarrhoea Infant colic	Heartburn Indigestion	Haemorrhoids Rectal pain Vomiting or nausea
Hay fever	Sleep difficulties	Tiredness
Cystitis	Vaginal itch or soreness	Vaginal discharge
Acute pain Ankle or foot pain Headache Hip pain or swelling Knee or leg pain	Lower back pain Lower limb pain Migraine Shoulder pain	Sprains and strains Thigh or buttock pain Wrist, hand, or finger pain
Acne, spots, pimples Athlete's foot Blisters on foot Dermatitis / dry skin Hair loss	Nappy rash Oral thrush Rash – allergy Ringworm / Threadworm	Scabies Skin dressings Skin rash Warts / Verrucae Wound problems
Cold sore blisters Flu like symptoms Hoarseness	Mouth ulcers Sore mouth Sore throat	Oral thrush Teething Toothache
Ankle or foot swelling Lower limb swelling	Thigh or buttock swelling Toe Pain or swelling	Wrist, hand, finger swelling

Flittabus

Flittabus

Community Transport Ltd.



Your bus service run by volunteers

Our website: <https://flittabus.co.uk>

FLITTABUS TO MILTON KEYNES

On the first Tuesday of each month Flittabus provides a service from Harlington to Milton Keynes and back. Ideal for city shopping.

In June, the MK service is on: Tuesday 4 Jun 2024

In July, the MK service is on: Tuesday 2 July 2024

As usual: **Departure from Harlington: 09:15 am**, from the bus stop on Station Road, a few yards down from the crossroads.

Return from MK: 1:00 pm from Central MK, Exit Door 5.

No need to reserve a seat: *It's first-come first-served.*

For details of the route and timings of the MK service please see the new timetable, available on all Flittabus buses.

FLITTABUS EXCURSIONS – details: flittabus.co.uk/excursions

- * **The Bluebell Railway, West Sussex**
Sat 8 Jun 2024 – £55 pp Transport and Unlimited Day Rail Travel
- * **Black Country Living Museum, Dudley**
Sat 22 Jun 2024 – £50 pp Transport and Admission
- * **Brighton**
Sat 13 Jul 2024 – £32 pp Transport only
- * **Stamford** and Cruise on Rutland Water
Thu 18 Jul 2024 – £43 pp Transport and Cruise
- * **Castle Ashby, Northants**
Tue 6 Aug 2024 – £37.50 pp Transport and Admission to Gardens

If you wish to book a place on an excursion, please phone **Derek Wood** on **07563 170 067** or email him at excursions@flittabus.co.uk

Flittabus accepts payment by Bank Transfer / Cash / Cheque / Credit or Debit Card.

Crafternoon Tea *plus* Wellbeing Walks



Have you noticed that hand made clothing goes in and out of fashion? My mother knitted all our jumpers and cardigans, and also made things for my children, which they were quite happy to wear – but their children prefer bought things – and frequently not knitted at all – sweatshirts and fleeces are preferred to jumpers and cardigans. Consequently, knitting and crochet also went out of fashion, since my family were not the only ones to prefer the bought. Until Tom Daley started sitting in the audience at the diving pool, watching the other competitions – and knitting. And then he learned to crochet

as well! Those of us who have always made things – not just knitted and crocheted things – may find the vagaries of fashion peculiar, particularly when we find that the basic materials we need are much more difficult to get, when “there is no demand for that any more, madam” (or sir, as the case requires). I wonder if that is why so many of us keep a stash of the things we so often need – and find it difficult to get these days. Embroidery silks, for example!

Crafternoon Tea meets fortnightly on Monday afternoons, between 2 and 4 pm, at the Methodist Church on Sundon Road. There are likely to be all sorts of crafts on the go, and we are happy to share what skills we have with others. We have materials, tools and magazines available, some always on the premises, and some which can be brought in if required, so let me know if there is something you are likely to want.

Our June meetings will be 3rd and 17th. 3rd June will be an **in-person only** meeting and 17th will be on Zoom as well as in person, and refreshments are served at each meeting.

Contact: Tina Salmon (christinasalmon60@gmail.com), 874481, website: <https://cliveandtina.co.uk>

Harlington Ramblers Wellbeing Walks

The Harlington walks happen every Friday morning and start from the Village Hall Car Park at 10.30am. They are a great way to stay fit, enjoy the village, and meet fellow residents. It is almost impossible not to feel good when we're walking outdoors – it's a natural mood-booster and a tonic for mind and body.



Advertisements

YOUR LOCAL FITTED KITCHEN & BEDROOM SPECIALISTS



FREE HOME DESIGN SERVICE
EXPERT INSTALLATION



Showroom:
Inside The Olde Watermill Shopping Village
Barton-Le-Clay, MK45 4RF Tel: 01582 882020

The
Kitchen & Bedroom
STUDIO

www.kitchenbedroom.studio



WHITE & FENSOME *BUILDING CONTRACTORS*



Tel: 01582 594766 Fax: 01582 594866
Mobile: 07860 967191 & 07899 806256

- PROPERTY MAINTENANCE
- DOUBLE GLAZING
- EXTENSIONS
- PLASTERING
- CARPENTRY
- FENCING
- ROOFING



HGS, HVH 100 Club & Dunstable Downs Service



ANNUAL COACH TRIP

This will take place on Saturday 22nd June to RHS Hyde Hall.

The coach will depart from Harlington Crossroads at 9 am. The cost will be £25 for the coach with free entry to the gardens for members, a saving of up to £17. (HGS membership is £4). Bookings will be on a first come, first served basis with

non-refundable cheque by 10th June payable to Harlington Gardeners' Society & delivered to me at 120 Goswell End Rd. Harlington

Tony Roberts – HGS Secretary

HVH 100 Club

The winner of the April 100 club was no 99 belonging to Ellie Bailey of Ampthill.

If you wish to be part of the 100 Club and have the chance to win £50, please contact me at: hvhtreasurer@btinternet.com. The money raised each month helps to fund the upkeep of the Village Hall.

Dave Thew, Treasurer, HVH Management Committee

Dunstable Downs Service—7th July



If you've looked at the list of services at the Methodist Church in June, you may have noticed that we have two evening Communion Services this month. That's because, on the 7th July, all the local Methodist churches are gathering

together on Dunstable Downs for an open air service, followed by picnicking together. The service starts at 11 am. Anyone who wants to join us is welcome. We have some chairs, but bring your own if yours is more comfortable.

Harlington In Bloom



The Summer Garden kerbside judging will happen in mid July/late July with the Awards evening following at the end of September. No need to enter. The entire village is walked around for consideration in the various categories from Hanging Baskets and Containers/Tubs to Allotments, Commercial Buildings to Public Buildings. The nominations are then looked at by independent judges for the village and the Allotments. This year we continue the new category up at the Allotments to cover the, new to last year, category of micro-allotment. Half size plots – a great way to get try your hand at it!

We are pleased to say that we have several expressions of interest from residents to enter Open Gardens 2025. It would be great to run it again. It helps if we can do a circular walk for some visitors to do a walking tour, with some people able to provide parking nearby for less abled visitors. So far we have interest from Bury Close, Sundon Road, Brian Road and Westoning Road under the Bridge. So do get in touch if you are interested. All sizes from pocket handkerchief, cottage, suburban, dry gardens or larger all welcome for consideration!

At our recent committee meeting, we discussed the displays at Village Hall car park. There will be an 80 flower design in the new bed to mark the anniversary of D-Day and appropriate flower colours. Do join for planting day on 1 June. No need to come to Village Hall Car Park as it gets hectic on a Saturday. Just turn up at one of the communal beds/planters convenient to you and a committee member will be turning up with the plants allocated and to plant. The beds will be stripped the previous week. If you fancy any of the plants to have a longer life in your garden or tubs, just nicely approach the teams when you see them.

We are delighted to have received some Sponsorship donations from **Harlington Village Shop (Sanjeev), Hub and Spoke Café, Top Man Cleaners, Green Valley Construction (Gary and Lisa Fountain), and Wednesday Morning Coffee group.** Thank you so much. It is very much appreciated and will be put to work in keeping the Village Blooming purposes in addition to regular planting. Very pleased to receive more!

All very welcome to our work parties below. Secateurs, trowels, spades, clip-pers, gloves, green bags all handy. Stop by and say hello even if you are not free to help. Working party dates for the rest of the year are now on the events tab on the facebook page!

Dates for your Diary (Some dates may be amended or added nearer the time)

Sat 1 June Summer Planting All Welcome 10.00 am

Sat 24 August Village Show Display boards, gazebo and maybe a Quiz!!!

Harlington In Bloom *ctd.* plus Advertisements

2.00 pm

Fri 27 Sept Awards Evening All Welcome 7.30pm

Sat 26 Oct Winter planting All Welcome 10.00am

Sat 9 Nov War Memorial Tidy Up for Remembrance Sunday 10.00am

Vivienne Dunlop on behalf of HiB Committee <https://www.facebook.com/HarlingtonInBloom/> messenger or judy.harfield@apertech.co.uk

(Treasurer); Rosemary Tuohy (Secretary) 07793 016207 Follow us on facebook page Harlington in Bloom for calendar events, nice pics and news updates!

“On this June day, the buds in my garden are almost as enchanting as the open flowers. Things in bud bring in the heat of a June noontide, the recollection of the loveliest days of the year, those days of May when all is suggested, nothing yet fulfilled.” – Francis King



Freelance proofreading and copy editing services. CIEP member; MA English Language.

Work with small business owners, self-published authors, and students. Open to clients from all sectors but specialising in speakers of English as a second language as well as people with dyslexia.

Contact:

emma@thehelpfulpuffin.co.uk / 07935 475363 for an informal chat about what you need and how I can help. (Former Harlingtonian with retained family connections).

PARISH HALL FOR HIRE

FOR ALL CELEBRATIONS & MEETINGS

Excellent facilities,

Fully equipped kitchen,

3 large meeting rooms,

Tables and Chairs provided,

Competitive prices,

For availability and

bookings please call: 01525 875933

Or E-mail:

Enquiries@harlington-pc.gov.uk

Harlington Lower School & Harlington Hedgehogs



At Harlington Lower School we are having an exciting summer term filled with lots of activities.

Recently Year 1 participated in a sponsored danceathon in order to raise money for World Wide Fund for Nature. They danced to their favourite music for 60 minutes! They raised approximately £150 and learn a lot about citizenship and supporting charity as well as having lots of fun!

We are looking forward to our annual Summer Fayre, organised by the Friends of Harlington Lower School. Please join us on Saturday 6th July at 11am for a range of stalls, games, activities and performances!



Recently we have had a number of young people entering the school premises after hours and at weekends and playing on the field or on equipment. This is trespassing. Please could anyone who notices people on the school site after hours let the school know so that we can confirm whether it is a legitimate booking and if not, take further action.

Harlington Hedgehogs

The Harlington Hedgehog hospital has been busy taking in hogs with a range of issues. Please!! If you are going to use a strimmer to tidy your garden, check for hedgehogs first. The hospital has already had a few injured from garden equipment and we're only just at the start of nice gardening weather.

Keep an eye out for any hedgehogs out in the day - if they don't appear to be nest building, it is highly likely they will need help.

A Reminder: please pack away football nets (or anything a tangle risk) after use, have an escape route from ponds and please leave out a shallow bowl of water. If you can have a hole in your fence, it would need to be 13cm x 13cm. This will help the hedgehogs to roam for food.

If you want to joining the Harlington Hedgehog Facebook page for advice on hedgehog welfare (or any small wildlife) please do!

Harlington Hedgehog Hospital contact: Kate Dimmock, 07572545179

Harlington Hedgehogs Facebook: 237 members

Harlington Lower School Summer Fair



SUMMER FAIR

All proceeds go towards educational and social enrichment for pupils at Harlington Lower School

Saturday 6th July
11am - 2pm

HARLINGTON LOWER
SCHOOL

FREE ENTRY

SUPPORT A GOOD
CAUSE AND HAVE
FUN!

- farm animals •
- BBQ •
- games •
- entertainment •
- raffle •
- market stalls •
- yummy food •
- and much more!

For more information
[scan the QR code or](#)
[click here](#)



Win some amazing prizes in our raffle!

- * Meal for 4 and a bottle of wine at The Carpenters Arms *
- * Claire Livingstone Family Photoshoot *
- * Bletchley Park Family Season Ticket * Family visit to The Hub *
- * Wrest Park Family Day Pass *
- and many more!

Flit Vale Wildlife Group



Wildlife Trust for
**Beds, Cambs
& Northants**

Wildlife walks & talks

Saturday June 1st, Flitwick Moor and Folly Wood (TL045354), 10.30am-3.00pm

Invertebrate Day at Flitwick Moor

A joint event with the Bedfordshire Natural History Society. Come and join us at this lovely reserve and see what can be found on the Moor! Families welcome (children must be accompanied by a parent/carer). All equipment will be provided and help given with identification of finds.

No charge, but donations welcome

Saturday June 15th, the new Hexton site acquired recently by Natural England, 10.00am

Flower walk* with Holly Bilcock, senior reserves manager for the North Chilterns

Last year Natural England finalised the purchase of 586 acres of the old Hexton Manor Estate. This piece of land directly borders Pegsdon Hills on one side, Ravensburgh bank SSSI on the other, Barton Hills Farm reversion plots which follows onto Barton Hills NNR. The vision is to create a continuous diverse habitat spanning across the local landscape working on the land at Hexton to revert it back to good quality, species diverse habitat in keeping with the local characteristics. Holly will lead us round part of the site and explain what is happening currently and what the plans are for the future.

Only a few places remaining.

*£4 per adult

Booking for outdoor Flit Vale events is essential, as places are limited.

Please contact Ann by email: flitvale.info@gmail.com or phone (leave a message or text if you prefer) 075801 78889 to reserve your place.

The Wildlife Trust for Bedfordshire, Cambridgeshire and Northamptonshire

Registered charity number: 1000412

www.wildlifebcn.org

Flit Vale Local Group

www.flitvale.org.uk

Advertisements



BlueSky Gardens

Fencing - Patios - Turfing
Decking - Planting

Garden Design

Call Jack for a free quotation!

07910838810

www.the-doghouse.uk



the DOG house grooming salon

- Bespoke and personalised
- Specialising in S-M sized dogs
- OCN 3 Dog Grooming Diploma
- Fully insured
- Trained in canine first aid
- State of the art equipment
- Professional salon products

 07725 051381 

STROBE ELECTRICS

ELECTRICIAN

NIC APPROVED

ESTABLISHED 25 YEARS

House Rewires Part P REG

No Job Too Big or Small

For a job well done

Quality Assured

Call Graeme

01582 451442
or
07956 570692



HI Education

Specialist Dyslexia tuition

- Qualified Specialist Dyslexia Teacher
- Member of the BDA with Accredited Teacher Status.
- 1-1 Phonics, Maths and English Tuition offered for Early Years, KS1 and KS2 learners.
- Fully Qualified Teacher - over 18 years teaching in local schools.
- Home-schooling and after school tuition offered.
- Enhanced DBS checked.

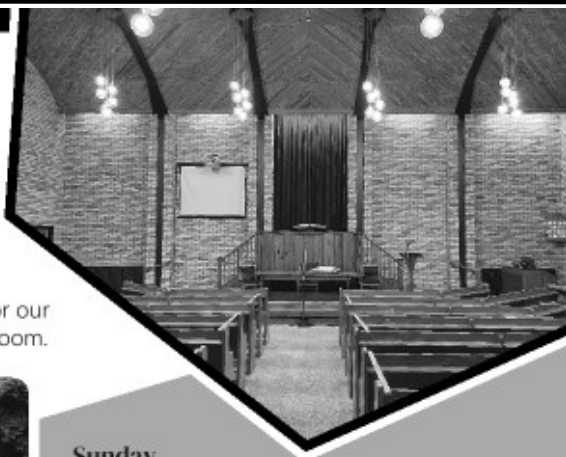
E-mail Helen Ingram on:
E: helen@hi-education.co.uk
www.hi-education.co.uk

Advertisements

Westoning Baptist Church

We are an independent Baptist Church in Central Bedfordshire.

You are very welcome to join us for our services at the Church or live on Zoom.



Sunday

Services 11am & 6pm

Sunday School 9.30am
- 10.30am (term-time)

Tuesday

Bible Study/Prayer Meeting
7.15pm

📍 Large free car park on site

📺 Zoom Meeting ID: 292 960 6969

📍 Greenfield Road MK45 5JD

🌐 westoningbaptistchurch.org



AMPHILL & FLITWICK PHYSIOTHERAPY CLINIC

Tel: 01525 720882

www.chartered-physiotherapy.co.uk

Info@anfphysio.co.uk

1 Kings Road Flitwick MK45 1ED

Helping you get back on track

We offer the very best hands-on physiotherapy treatment

Neck/ Back/ Shoulder/Knee pain

Headaches/Migraines/Sciatica

Arthritis and all joint pain

Whiplash/RSI/Osteoporosis/Sports injuries

Vertigo and dizziness/Posture training and ergonomics

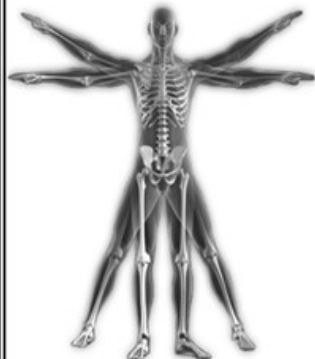
Long Covid

WE ARE PROVIDERS FOR MOST INSURANCE COMPANIES

We also offer complementary treatments:

Acupuncture/Chinese medicine

Clinical Psychology/Deep Tissue Massage



Messy Church News

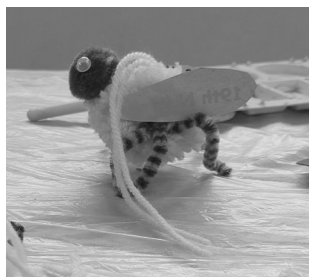


Passover is usually quite close to Easter, but not always. This year Passover started on the Monday after our April Messy Church. Which was quite good, as we'd plan to look at Passover without having checked when it was!

Looking at Passover means looking at Moses leading the Hebrews out of Egypt, and the plagues. It also involves the Passover meal. The plagues included flies and other insects and the Nile turning to blood.



Unfortunately it's very hard to show something changing from blue to red in black and white but if you see the actual picture, the river colour



depends on which way you look at it. Food for the meal included roast lamb, but as we didn't have time for that we made lamb shaped biscuits instead. We were thinking about the way Jews celebrated in Jesus time.



In our next Messy Church, at 4 pm on 15th June, we will be thinking about Jeremiah, an Old Testament prophet who was quite young.

For those who don't know, from 4 pm we have activities, including painting, cooking, model making or similar, then at 4.45 pm we go into our celebration, with stories, songs and some more activities. While we're doing that, someone else is setting out tea, which we have from 5.30 pm to 6 pm.

We have a Zoom link for those who can't get to the chapel, and livestream the celebration to YouTube, which also provides a recording. Don't forget, while children need an adult, Messy Church is not just for children. If you find that making things helps with the Bible stories, Messy Church may be for you.

Clive

"Let it be June, bring the summer beach back, and let our life be simple again."
– Anonymous

LIFE Church & BABY & ME



LIFE CHURCH HARLINGTON

Sunday services at 10.30 am in The Parish Rooms

All Welcome

June 2024

2nd – Pete Gilbert

9th – Word Sunday

16th - TBA

23rd – Scott Pettingale

30th – All Age Café Church

Wednesday 7.15pm Prayer meeting on Zoom.

For more information check us out on our website.

You can also contact us through our website if you have any prayer requests or would like to talk to someone

www.life-church-harlington.com

BABY & ME

Drop in for parents and babies 0 – 12months

Thursday 20th June

Parish Rooms 10 – 11.30

Coffee and Cake

Toys/Sensory Activities



Life Church Harlington

Methodist Church

We meet in person in the church and, for morning services, also have people join on Zoom, or view the service on YouTube. Everyone is welcome.



JUNE preachers are:

- | | | |
|------------------|-------|---|
| 2 nd | 10 am | Come and See led by Martin Wallis |
| | 6 pm | Rev. Claudia Lupi. This service includes Holy Communion |
| 9 th | 10 am | To be arranged |
| 16 th | 10 am | Rev. Claudia Lupi. This service includes Holy Communion |
| 23 rd | 10 am | To be arranged |
| 30 th | 10 am | Ivor Mitchelmore |
| | 6 pm | Rev. Claudia Lupi. This service includes Holy Communion |

If you want to join us on Zoom, the Zoom link is normally sent out the day before. Email me, clivedsalmon@aol.com, or phone 874481 to be added to the Zoom email list, or if you would like our printed service emailed to you.

COFFEE MORNING 29th June, from 10 am to 12 noon, in the hall

BRIGHT HOUR FELLOWSHIP

The Bright Hour Fellowship meets every Thursday afternoon at 2.45pm at the Methodist church Hall. Members have the opportunity to hear from a variety of invited speakers, share in the company of others and enjoy a nice cup of tea.

So why not join us? New members are always made very welcome. No need to book ahead, just come along! We look forward to seeing you soon.

Speakers for **June**:

- 6th - Children singing from Sundon Lower School
- 13th - Sheila Norris talking about Bangladesh
- 20th - Alan & Christine Parfit on Gilbert and Sullivan
- 27th - Claudia



ROOM BOOKINGS

Contact Trevor Caveney if you are interested in booking any of our Halls, Rooms or the Church. The Halls are suitable for meetings, groups, clubs and particularly good for children's parties. Reasonable prices. Tel 01525 754527 or hmc.bookings@ntlworld.com

St Mary's Churchwarden

St Mary's Church



Churchyard: Tuesday May 21st saw a few of us tidying the churchyard. I was standing in my garden recently wondering where the sun had gone.....then it dawned on me!

Midsummer Dinner: join us on Saturday 29th June in church, starting with a glass of Pimms or fruit juice at 7pm, followed by a 'Summery' 3 course meal. Contact me by Sunday 16th June to book: tricia.murphy5@ntlworld.com.

Strawberry Tea at Lower East End Farm: Sunday 14th July at 2pm. Free entry, donations appreciated. Enjoy a strawberry tea, (or bring a picnic), live music and children's games. Come and meet all the animals and walk around the gardens. Proceeds to St Mary's Church Restoration Fund.

South Porch: the contractors have 'officially' finished the work on the south porch, having repaired the brickwork and cracks and with new rendering in situ. It should remain stable now for many years to come. We're just waiting for a completion certificate so that we can finalise the remaining 2 grants, one from the Beds & Herts Historic Churches Trust and one from The Francis Coales Charitable Foundation, totalling about £12,500. A huge thanks to both of these charities for their financial support.

Family Messy Breakfast: June's free fun session is on Sunday 16th from 9am to 10.15am in the Parish Hall. Continental breakfast, crafts and story, led by Rebecca. All welcome.

For service and event information, either check Contact, the noticeboard outside church or our website: www.harlingtonchurch.org. If you'd like to speak to someone, please contact myself, Churchwarden Neil Walter, or email our Lay Reader, robert@harlingtonchurch.org.

Best wishes, Tricia Churchwarden

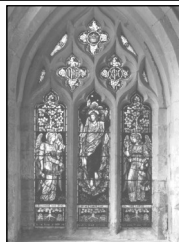
Search for the perfect church if you will;
when you find it, join it, and realize that
on that day it becomes something less
than perfect.

Andrew Greeley



St. Mary's Church Services

Everyone is welcome to attend Sunday services in our beautiful village church. On Wednesday 5th. June there is the licensing service for our new Priest-in-Charge, Rev. Mark Edwards. This is a diocesan service which is by invitation only, but on Sunday 9th. June there will be an opportunity for everyone to attend Fr Mark's first communion service which will be held at Westoning Parish church followed by lunch in Westoning Village Hall. On 6th. June at 6.30 p.m. there will be the national Ringing Out for Peace D-Day commemoration followed by a short service in church. June's services are:



Sundays

- 2nd 8 am Book of Common Prayer Service
9.30 am Morning Praise service
9th 10.00 am Benefice Communion Service at Westoning Church
16th 9.00 am Messy Breakfast in Parish Hall
9.30 am Holy Communion
23rd 9.30 am Holy Communion
30th 9.30 am Holy Communion

Wednesdays

Every Wednesday 10 am Holy Communion or Morning Prayer

Special services

- 5th 7.30 pm Licensing service for Rev. Mark Edwards, new Priest-in-Charge
6th 6.30 pm D-day national bell ringing followed by short service in church

Other times

The church can be made available for private prayer by arrangement, contact one of the church wardens, Tricia Murphy tricia.murphy5@ntlworld.com or Neil Walter walterfamily@btinternet.com, or the Church Reader Dr. Robert Johns robert@harlingtonchurch.org. Alternatively email admin@harlingtonchurch.org

For personal enquiries, for requests for prayer, or for enquiries about baptisms, weddings or funerals please contact Dr. Robert Johns robert@harlingtonchurch.org or 01525 873214.

Further information and useful links

The church noticeboard is kept regularly up-to-date as is the church website which is at <https://www.harlingtonchurch.org>

Remember that we are here for you.

Dr Robert Johns (Reader), Tricia Murphy and Neil Walter (Church Wardens)

Advertisements



VILLAGE POLISH
Cleaning service

Don't waste your precious time on cleaning.

Let us do it for you.

No mess, no stress!

Contact Dagmara

Mobile: 07940 172062

Recommended by Harlington villagers.

bacp | Registered Member
379415
MBACP

Life throws us many challenges

Sometimes we all need a little help to find our way through



Harlington Counselling

Online and in-person counselling
for adults and young people (16 years+)

Are you feeling overwhelmed, anxious or depressed?

Are you struggling in relationships or unable to cope with the loss of a loved one?

Speaking to a trained therapist means having a safe, confidential space to talk about your feelings, to consider positive change and take control of your mental wellbeing.

EMAIL:
natasha@harlingtoncounselling.co.uk

TELEPHONE:
01525 591025

VISIT:
www.harlingtoncounselling.co.uk

Advertisements

Kinsbridge

Plumbing Heating Gas
and Electrical Engineers

All Plumbing, Heating, Gas and Electrical work undertaken .
Boilers , Radiators , Underfloor Heating Systems . Unvented Hot water systems , LPG
Power Flushing (to remove heating system sludge) Full rewires, Consumer unit upgrades
Kitchens and Bathrooms (complete install , supplied and fitted) Landlords Certificates

Mobile: 07973842037

Web: www.kinsbridge.co.uk

Office : 01525 600024

Email: info@kinsbridge.co.uk

Proud members of
Checkatrade.com
Where reputation matters



551729



James

Plumbing & Heating

Local, reliable and quality service

-  Boiler servicing
-  Landlord Certificates
-  Boiler and central heating installation
-  Heating breakdowns
-  Heating and boiler upgrades
-  Radiator replacement or relocation
-  General plumbing work

Call for a free no obligation quote.

Mob: 07970 275358

Tel: 01582 882245

Email: danieljames5@outlook.com




KP Sewing Repairs & Alterations

Sewing by hand or machine

Friendly, convenient service
Pick up & deliver
Harlington based



Contact Karen:

 07930 443123

 kpsewing@outlook.com

Village Diary *plus* Wednesday Coffee Mornings

June

1 st HiB Summer planting	Village Hall 10 am
1 st Wildlife walk	Flitwick Moor and Folly Wood 10.30 am
3 rd Crafternoon Tea	Methodist Church Hall 2 – 4 pm
4 th Flittabus	Station Road bus stop 9.15 am
15 th Flower Walk	Hexton 10 am
15 th Messy Church	Methodist Church and Halls 4 – 6 pm
16 th Messy Breakfast	Parish Hall 9 am
17 th Crafternoon Tea	Methodist Church Hall 2 – 4 pm (plus Zoom)
20 th Baby and Me drop-in	Parish Rooms 10 – 11.30 am
29 th Coffee Morning	Methodist Church Hall 10 am to 12 noon

July

1 st Crafternoon Tea	Methodist Church Hall 2 – 4 pm (plus Zoom)
2 nd Flittabus	Station Road bus stop 9.15 am
6 th Summer Fair	Harlington Lower School 11 am – 2 pm
7 th Open Air Service	Dunstable Downs 11 am
9 th Beer and Hymns	Carpenters Arms 7.45 pm

Don't forget the regular weekly things like the Wednesday Coffee Mornings and Friday Ramblers Wellbeing Walks that aren't shown here.

You can send things just to be entered here.

**GET YOUR JULY 2024 DATES TO THE MAGAZINE BY
10TH JUNE 2024**

Wednesday Coffee Mornings and Games



If you would like to join us for coffee/tea, a chat or a game of table tennis we would love to see you. We meet every Wednesday in the Parish Hall from 10 am until 12 o'clock. The Games Group section have begun playing table tennis again and you are very welcome to join us. We also

have a small snooker table, and if anyone would like to come perhaps to play different indoor games eg chess, card games or Scrabble, please do come along any Wednesday morning to see us and have a chat. Doreen Gatward and Valerie Bates.

