

Editorial

Dear Villagers,

First, apologies that I didn't change some of the dates to May last month—I usually get a month ahead, not behind.

If you haven't yet commented on the new Local Plan, you may just have time.

I haven't been able to sort a June date to discuss the magazine as I had hoped, there will be a date—watch this space. In the meantime don't hesitate to contact me. I will be at the Lower School Summer Fayre, at the sound tent, if you want to speak directly.

I will be producing an up-dated directory in July or August. Let me know of any changes from the January version—you can find the January issue on-line if you've lost your copy.

Do use the magazine to communicate with villagers old and new.

Clive

CONTACT

Harlington Village Magazine

Editor

Clive Salmon
01525 874481

e-mail and advertising

harlingtonvillagemagazine@yahoo.co.uk

Distribution

Debbie Miles

Postal Subscriptions

Betty Goodge
01525 873725

Treasurer

Sue Whittle
07887 708304

Contents

Letter from the Life Church	4
Wednesday Coffee and Games	5
Ramblers Wellbeing Walks	5
Flittabus	6
Flit Vale Wildlife Group	7
Messy Church News	8
Half Way Up The Hill	8
Lower School Summer Fayre	9
Brain Tumour Research	10
Harlington Lower School	11
Harlington in Bloom	12
Harlington Performs	13
Art Exhibition	13
The Hub and Spoke Café	14
Harlington Village Show	15
Bedfordshire Local History Association	16
Crafternoon Tea	17
Harlington Parish Council Information	18
Harlington Dog Show	19
Westoning Baptist Church	21
Harlington Gardeners' Society	21
Life Church	22
Lighthouse Father's Day BBQ Breakfast	22
Methodist Church	23
Bright Hour Fellowship	23
St. Mary's Churchwarden	24
St. Mary's Church Services	25
Village Diary	28

Contact is also published on-line -
<https://harlingtonvillagemagazine.org>

DISCLAIMER

Please note that Contact Magazine does not officially endorse any advertising material included in this publication

Our preferred typeface is Times New Roman for regular articles and notices. Submissions should be suitable for A5 format. Submissions may be abridged for space reasons and inclusion is at the discretion of the Editor/Management Team.

July 2026 copy by 10th June please.

**PROMPT PAYMENT OF
ADVERTISING INVOICES WOULD
BE GREATLY APPRECIATED**

Advertisements



GARAGE

service x repair

My name is Jack Chauhan, I live in Harlington and own a family Garage in Luton
Beech Hill Garage (Est 1977) 110 Marsh Road Luton LU3 2NL

Tel 01582 504929/ 07860209098.

We repair/service **all makes and models** and no job is too big.

We have competitive rates and customer satisfaction is paramount to us.

I have customers who live in the village, who would happily provide a reference
if requested.

I would appreciate it, if next time you want your car serviced/repared that you
consider me.

I can pick-up/return your car/van from the village.

STROBE ELECTRICS

ELECTRICIAN

NIC APPROVED

ESTABLISHED 25 YEARS

House Rewires Part P REG

No Job Too Big or Small

For a job well done

Quality Assured

Call Graeme

01582 451442

or

07956 570692

HI Education

Specialist Dyslexia tuition

- Qualified Specialist Dyslexia Teacher (BDA Member with Accredited Teacher Status)
- 1-1 specialist dyslexia tuition offered for EY, KS1, KS2 and KS3 learners.

English and Maths 1-1 tuition

- 1-1 Phonics, Maths and English Tuition offered for Early Years, KS1 and KS2 learners.
- Fully Qualified Teacher - over 18 years teaching in local schools.
- Home-schooling and after school tuition offered.
- Enhanced DBS checked.

E-mail Helen Ingram on:

E: helen@hi-education.co.uk

www.hi-education.co.uk

Advertisements



IRONING | LAUNDRY | ALTERATIONS | REPAIRS

Your Harlington Laundry and Ironing Service.

Washing and/or ironing, alterations, repairs, wedding dress cleaning, curtains, duvets, blankets mattress toppers and throws. Curtain linings changed

Private and business customers welcome.

Monday to Friday - 9am to 6pm
Saturday - 9am to 5pm

Please pop in or we can pick up and deliver to you.

2 Lincoln Way , Harlington, LU56NA 01525
875980 | 0745 9906412

darrenmayhew
HANDYMAN *from* **HARLINGTON**

- | flat pack furniture | diy
- | decorating | minor repairs
- | jet washing | garden tidying
- | fence painting... and much more!

For anything at all, big or small, why not give me a call on

07867 918389

darren@mayhew.biz



StotenGillam
chartered accountants
chartered tax advisers

Providing an outstanding professional, cost effective and friendly service to our business and personal clients.

OUR SERVICES

-  Taxation
Pay the minimum tax
-  Compliance
Business administration
-  Support
Grow your business
-  Start-ups
Your business a reality
-  Get to know you
Consultancy & advice

Call now for a free initial consultation
01582 608601

01582 608601 enquiries@stotengillam.co.uk
www.stotengillam.co.uk
Alban House, 99 High Street South, Dunstable, LU6 3SF

**Washing Machines
Dryers - Dishwashers
Repairs, Servicing & Sales**



A local family business offering a quality service at a competitive price
Est. 1981



**Tel:01525 860148
Or Tim Downing direct on
07969 545 276**

A member of the
White Goods Trade Association
Fully insured

A letter from the Life Church

At a recent conference I attended we were surprised with a goody bag filled with lovely bits and pieces . Amongst the pens, notebook and of course chocolate was a beautiful travel mug. A label that was attached to it by a pink ribbon was adorned with the words ‘just for you’ and the label stated ‘fuel for the calling, brewed for battle’. It made me think what is the fuel we need to cope with the challenges and journey of life.

How do you start the day? When I was expecting our first daughter my husband would woke me up with a large strong cup of tea, this enabled me to wake up and to face the day with whatever it held for me. I am pleased to report he has continued to do this every morning since! The cuppa would then be followed with breakfast and a cup of coffee. This gave me the fuel for the events of the day.



Without our drinks and food we become hungry, thirsty and become dehydrated, this can cause us to become unwell, lacking in energy and enthusiasm.

In the bible food and drinks are often portrayed as a tool for fellowship and generosity, emphasising eating together with joy and sharing with others.

Beyond the need for physical sustenance, the Bible uses food as a metaphor for physical nourishment, with Jesus describing Himself as “the bread of life”, it highlights that spiritual fulfilment is superior to physical consumption.

As Life Church we love spending time together over food and drinks, every week refreshments are served, once a month we have a brunch as part of our meeting. We then often meet up for meals or coffee during the week. As you read the Bible we see that Jesus often met people when he was on the way to a meal, at a meal or after a meal; for example the story of Zacchaeus, a tax collector who climbed up a sycamore tree to see Jesus. Jesus spoke to him and then invited himself to come to his home and have a meal. Also, the little boy who had his small picnic of two loaves and five fishes, saw Jesus proceed to perform a miracle, and feed over 5000 people and a surplus of 12 full baskets. Zacchaeus and the little boy had encounters with Jesus and their lives were changed.

I know sitting around a table eating is a place where we talk and share our lives. I often will sit with my cup of tea and breakfast or lunch and spend time with Jesus reading his word, the Bible and praying. It is a place I encounter him and share my heart.

Jesus would like to invite you to come and sit and enjoy a ‘meal’ with him. Are you hungry? You have a personal invite.

As I enjoy using the new mug - it keeps my drink hot when I sit outside enjoying

Letter Ctd., Wednesday Coffee, Wellbeing Walks

the British weather - I remember the ribbon and the personal invite, 'just for you', and just to update you, the chocolates were enjoyed and finished before I arrived home.

Here I am! I stand at the door and knock. If anyone hears my voice and opens the door, I will come in and eat with that person, and they with me. Revelation 3:20

Blessings

Carol Gibbs

Leader

Wednesday Coffee



If you would like to join us for coffee/tea, a chat or a game of table tennis we would love to see you. We meet every Wednesday in the Parish Hall from 10 am until 12 o'clock. The Games Group section are playing table tennis again and you are very welcome to join us. We also have a small snooker table, and if anyone

would like to come perhaps to play different indoor games eg chess, card games or Scrabble, please do come along any Wednesday morning to see us and have a chat.

Doreen Gatward and Valerie Bates.



Harlington Ramblers Wellbeing Walks

The Harlington walks happen every Friday morning and start from the Village Hall Car Park at 10.30am. They are a great way to stay fit, enjoy the village, and meet fellow residents. It is almost impossible not to feel good when we're walking outdoors – it's a natural mood-booster and a tonic for mind and body.



Whether you used to enjoy walking but have lost your fitness or want to get started to improve your wellness, we're all in it together. We're a friendly bunch so you'll get the warmest of welcomes. Everyone walks for their own reasons, whether to ward off illness, manage health conditions or boost their wellbeing. Yet we all get more out of it by walking together.

Flittabus

Flittabus

Community Transport Ltd.



Your bus service run by volunteers

Our website: flittabus.co.uk

Our excursions: flittabus.co.uk/excursions/

07563 170067

Our NEW HELPLINE: 07908 620704

FLITTABUS TO CENTRAL MILTON KEYNES

Route FL11

<i>Date</i>	<i>Depart Harlington</i>	<i>Depart CMK</i>
Tue 2 June 2026	9:15 am Bus stop on Station Rd, a few yards down from the cross-roads.	1:00 pm Exit Door 5

FLITTABUS TO FLITWICK TESCO

Route FL6

<i>Dates</i>	<i>Depart Harlington</i>	<i>Depart Flitwick</i>
Thu 4/11/18/25 June 2026	9:03 am Westoning Rd 9:05 am Wingate Rd 9:07 am Lincoln Way Shops 9:10 am Bury Close 9:12 am opposite Tabor Close	10:50 am Tesco

FLITTABUS TO HITCHIN

Route FL7

<i>Dates</i>	<i>Depart Harlington</i>	<i>Depart Hitchin</i>
Fri 5/12/19/26 June 2026	9:17 am Upper School Goswell End Rd	12:15 pm St Mary's Square

**FLITTABUS EXCURSIONS – flittabus.co.uk/excursions/
excursion bookings line: 07 563 170 067**

<i>Date</i>	<i>Excursion</i>	<i>Cost per person</i>
Fri 19 June 2026	Ely Cathedral Home/Gdn Show	£48
Mon 26 June 2026	Stamford and Rutland Belle cruise	£48
Details at: flittabus.co.uk/excursions		

Flit Vale Wildlife Group



Wildlife Trust for
**Beds, Cambs
& Northants**
Flit Vale Local Group



Wildlife walks & talks

Tuesday, June 9th, Pegsdon Hills Nature Reserve, (TL121303), at 7.00pm
An evening walk lead by Dr Graham Bellamy

A walk around this lovely nature reserve to look for the many chalk grassland plants some of which are rare in the county. We will be keeping a look out for birds and invertebrates too. Meet behind The View pub. Parking is on the road behind the pub or the lay-by near The Lodge. Please do not park in The View car park or drive over it.

Charge: £5.00

Thursday, June 18th, Manor Park, Flitwick, (MK45 1NZ) at 7.00pm
Guided tree-walk round Flitwick's Manor Park

David Alderman will lead a walk round Manor Park concentrating on the trees species to be found here. David is an authority on trees. This will be a fascinating and, for anyone unfamiliar with the park's 'arboreal' history, surprising visit. Meet at the entrance to the site (on Dunstable Road). Parking is on nearby local roads. Please do not park in the Flitwick Manor Hotel grounds.

£5.00 per person

Booking for outdoor Flit Vale events is essential as places are limited.

Please contact Ann by email: flitvale.info@gmail.com or

Phone (leave a message or text if you prefer) 07580 178-889 to reserve your place.

The Wildlife Trust for Beds, Cambs & Northants
Registered charity number: 1000412
www.wildlifebcn.org
Flit Vale Local Group
www.wildlifebcn.org/flit-vale-local-group

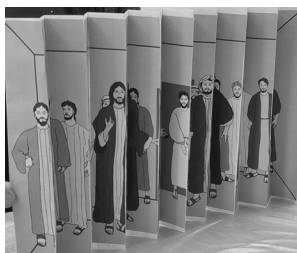
"It is better to be a young June-bug than an old bird of paradise"

- Mark Twain

Messy Church News *plus* 1/2 Way Up The Hill



If you think back that far, Easter was right at the beginning of April, so in our April Messy Church we thought about the times Jesus met his disciples after the resurrection. It's very difficult to have a picture of someone appearing and disappearing; we made an agamograph, here are two views. We made mosaic



fish to think about Jesus by the Sea of Galilee, cooked egg shaped pies and made splat butterflies, which relate to tradition ways to look at resurrection, and cut out foot shapes for walking.

Our June Messy Church will take place on the 20th at 4 pm in the Methodist Church and halls. Our theme will be sharing.

Don't forget, while children need an adult with them to help them with crafts, Messy Church is not just for children. If you find that making things helps with the Bible stories, Messy Church may be for you.

Clive

Half Way Up The Hill—More from the Methodists

People have asked us what the “things” screwed to the front door are. They celebrate the Bronze and Silver eco-church awards that we have gained. As the church hasn't got a lot of space around it, so eco-church things are difficult for us—we can't have a wild meadow area, for example, but it is important for us that we look after creation as well as we can.

This covers things like minimising use of materials, using recycled paper, having efficient lights etc. This means that we will need to consider ways that we can reduce our carbon footprint, particularly when we need to replace things, such as our heating or lighting, in future.

It also means members of the church living eco friendly life-styles, sharing cars when going out of the village to meetings and so on. It would be good if we could get our Gold, but that is a much more difficult level.

In the mean time, the Circuit, which we are part of, is also aiming for an award.

Lower School Summer Fayre



Plans are well underway for the Harlington Lower School Summer Fayre - which is taking place on Saturday 27 June, 11am to 2pm on the back field of the school.

We are hoping the day will give the children a super fun, summer fayre experience, and also make it a great event for the community in Harlington to come together.

Returning this year will be some of our favourites - performances from the children at the school and our community performing arts groups. We also have some rather fun inflatables booked for the kids to enjoy and will be having our famous barbecue with food from Deacons Butchers.

But we also have some new stalls, and will see a return of our wonderful traditional games. We hope it will be a fun day for everyone and look forward to seeing you then.

"Who comes with Summer to this earth
And owes to June her day of birth,
With ring of Agate on her hand,
Can health, wealth, and long life command."

- *June*

Brain Tumour Research



**Brain Tumour
Research**

Funding the fight

Such a busy month!



This has been a very busy month both with family birthdays and gatherings and for my charity work.

I feel like I have been juggling balls to be at this point. Sowing more seeds as plants fly out, potting on and pricking out, watering in April's dry, hot and sunny month (well sometimes) and I know it was as the water butts are close to empty!

I was able to put the tomato and courgette plants in my greenhouse with its new more robust cover which protected them from the rogue frosts we have suffered. I think the brick drive wall also provided warmth acting like a radiator at nighttime. As a result of this we are off to a flying start and so far £639.90 worth of plants and plant sundries have been raised so far this year. A big shout out to Andrew who posted photos and listed available plants on the Harlington Village Facebook, it has brought lots of new faces to my door and lots more donations. Thank you to those who responded to Andrew's posting and have supported our fundraising. Another shout out to Michael, Stephen, John, Liz, Dick, Gwen and Debbie for plants which boost what I have on offer when there has been a run on sales, which was frequent last month!

I still have plenty of plants to come out once we are certain there will be no more frosts, there will be marigolds, zinnias, cosmos, Clary, sunflowers, geraniums, cucumbers, runner beans, fine beans, more tomatoes, courgettes, house plants and anything else that kind villagers drop off after they have planted up their gardens.

So don't delay, come and join the growing community in Harlington, it really is fun and thrilling when you cut a bunch of flowers or vegetables to have for dinner. If you would prefer come and see what fresh vegetables or fruit might be in the trug on the table for a donation to the charity, plenty of rhubarb has been taken so be quick as June/early July will be the last month for picking rhubarb!

Enjoy the summer when it gets going, enjoy your gardens or growing.

See you in June

Best wishes in June

Jane Barltrop

132 Goswell End Road

Harlington Lower School



The summer term is officially in full swing at Harlington Lower School, and the warmer weather has brought with it a renewed sense of energy and focus. Our classrooms have been buzzing with activity as the children dive into the curriculum, and we are particularly proud of the high standard of work being produced across all year groups. This term has seen some truly brilliant writing from our pupils, alongside a stunning collection of artwork from Year 4. Their detailed studies of the intricate patterns and textures found inside pieces of fruit have brought a vibrant splash of colour to their classroom.



A significant development this term has been the successful transformation of a former office into a dedicated, high-quality sensory room. This project was made possible by funding from the Local Authority's Inclusion Innovation Fund, which allowed us to install a variety of equipment including an interactive

bubble tube, mirrors, sequin panels and a dark tent. This is a fantastic addition to our school as it allows us to



better support children with special educational needs and social, emotional and mental health needs.

We are looking forward to our upcoming school fayre, which is being organised by the FRIENDS of Harlington Lower School. The event will take place on Saturday 27th June, running from 11am until 2pm. It promises to be a wonderful day of fun and festivities, and we are very much looking forward to seeing as many people as possible there to celebrate the local community.

Harlington in Bloom



We will welcome sponsors again for our activities to make the village decorative. While Harlington Parish Council pays for the main bedding plants for the village, sometimes we need a little extra for maintenance or capital expenditure on equipment such as the bowser and irrigation systems, extra bulbs, planter renewal etc. Would you like to be a sponsor? Contact Rosemary Tuohy (Secretary) 07793 016207 or rosemarypc86@gmail.com for further information. Many thanks to **Harlington Shop** and **Green Valley Construction** for the recent splendid donations.



Many thanks to all who turned out for the weeding and pruning party on 2 May to tackle the bed outside Orchard House. Quite heavy work.



Also, by the time you read this, we will have planted up the summer bedding including the Village Carpark bed celebrating 40 years of the Harlington Village Show and of Harlington Performs. The scheme incorporates nemesia, geraniums, begonias, salvia and cineraria.

HiB *ctd.* Harlington Performs, Art Exhibition

We look forward to meeting you at one of our dates! New to the village? Do just turn up and give us a *follow* on FB.

Dates for your Diary (Some dates may be amended or added nearer the time) All meet at Village Hall Carpark unless otherwise specified

Sat 30 May	Summer Planting. All Welcome	10 am
Week Commencing 11 July Summer Judging of front gardens, containers etc		
Sat 18 July	Weeding/pruning work party All Welcome.	10 am
Sat 29 Aug	Hosting HiB Gazebo at 40 th Village Show	
Sat 5 Sept	Weeding/pruning work party. All Welcome	10 am
Fri 25 Sept	Awards Evening All Welcome	7.30 pm
Sat 31 Oct	Winter planting All Welcome	10 am
Sat 7 Nov	War Memorial Tidy Up for Remembrance Sunday	10 am

Vivienne Dunlop on behalf of HiB Committee <https://www.facebook.com/HarlingtonInBloom/> or judy.harfield@apertech.co.uk (Treasurer); Rosemary Tuohy (Secretary) rosemarypc86@gmail.com

In loving memory of Andra Bishop,
Harlington Performs & Gestalt Theatre presents our

40th Anniversary SHOWCASE

includes classic songs, solos, duets, dances,
scripted and improvised drama.

11th JULY 2026
2.30pm & 7.30pm

TICKETS £10
CONCESSION £8

HARLINGTON VILLAGE HALL

tickets available at Bradshaws or online:
www.ticketsource.co.uk/harlington-perf




'Echo From The Void'

an exhibition by
stanley greening




stanleygreening.com stanley_greening

St Marys Church
Harlington
Bedfordshire LU5 6LE

Opening times
Thursday/Friday 1pm - 5pm
Sat/Sun 10.30am - 3pm

June 4th to June 7th

*Plus artist's talk, Saturday 2pm.
Stanley will talk about his ideas and
processes - don't miss it.*

Hub and Spoke Café



The Hub and Spoke Café, Harlington

MORE THAN A CAFÉ.

Cake & Coffee
Lunches
Dogs welcome
Cyclists stopping by
Village catch-ups
Pizza nights
Afternoon teas
Funeral gatherings
Family celebrations

At The Hub & Spoke Café, we're proud to be part of everyday life in Harlington — from quick coffees to the moments that matter most.

Whether you're meeting a friend, organising a family gathering, planning an afternoon tea, or quietly needing help after a bereavement, we're always happy to have a conversation and see how we can help.

The Hub & Spoke Café
Harlington

01525 753367

robandsue@thehubandspokecafe.co.uk

Harlington Village Show

40th Harlington Village Show

Saturday 29th August 2026



Well, the schedule has gone to the printers at last and we all breathe a sigh of relief – hoping that there aren't too many deliberate mistakes! The hints and tips are inside, as are all the Show rules, so do read them through when the schedule pops through your door in July. Our Facebook page will also have some advice about the classes. You can email us for more information at harlingtonvillageshow@gmail.com.

As it is our 40th year, we have an extra children's class across the age groups which is a picture of our schedule cover to colour in. Copies will be distributed in the Lower School and also at the Lower School Fayre on June 27th. If your child completes the colouring sheet and you're not available on Show Day, entries can be left at 43 Barton Road, in the school office, or at Harlington Shop. You need to include your mobile number, plus child's name and age. Entries will then be displayed and judged at the Show. We will also have a stall at the school Fayre, so if you have any queries or questions please come and see us.

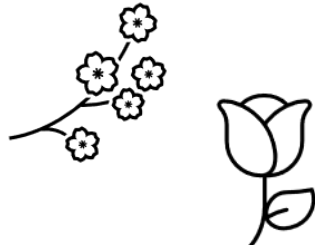
If you need more entry forms nearer the time, they will be available at the newsagents from July 1st. Entry forms need to be submitted by 5pm on Thursday 27th August. The entry form lists the addresses where you can drop off your entry form.

Trophies won in 2025 should be returned by the end of July at the latest please. Take them either to 43 Barton Road or 126 Goswell End Road, but please check that someone is in to receive them. Thank you.

Tricia & Harlington Village Show Committee

"What is one to say about June, the time of perfect young summer, the fulfilment of the promise of the earlier months, and with as yet no sign to remind one that its fresh young beauty will ever fade."

- Gertrude Jekyll, On Gardening



Luton's Heritage: Made and Shaped

The History of George Street,
Luton's Town Centre



Luton Made: Vauxhall - Heritage
Project Funded by the National
Lottery, Celebrating the History of
Vauxhall



The Leigh Family at Luton Hoo and
their Involvement in the Railways to
Luton



The Power of Church Patronage to
Shape the Social History of a Town,
1763-1896



With optional guided tour of St Mary's, a Grade I Listed Building

BLHA Bedfordshire Local History Association

AGM & Conference 2026

Saturday, 6th June at St Mary's Parish Church, LU1 3JF

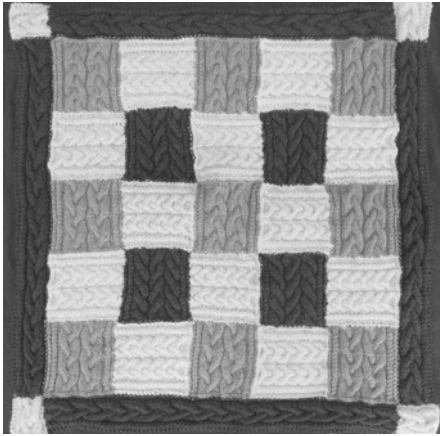
Tickets including buffet lunch £27.50

www.bedfordshire-lha.org.uk



Crafternoon Tea

Have you looked at the craft classes for the Village Show in August? They were in the May issue of this magazine. Anyone who is a village resident can enter for the show, and the whole event is great fun, even if you are, like me, not a gardener or particularly good with plants. The craft classes can produce some



amazing productions, from the children up to the adults. While nothing you show this year can have been shown before, it doesn't mean you have to have made it between now and the show – one of the items I showed last year was made many years ago. However, if you do want to make new for this year, there is time! If you didn't notice the article, and have thrown the magazine away, it is available online at <https://harlingtonvillagemagazine.org>

This was my contribution last year – it didn't win, in case you wanted to know, but, like all entries that were not reclaimed, it went to a good cause – the Linus charity.

Crafternoon Tea meets on alternate Mondays, at Harlington Methodist Church, between 2 and 4 pm. There are likely to be all sorts of different crafts on the go, and we are happy to share what skills we have with others. We have materials, tools and magazines available, some always on the premises, and some which can be brought in if required, so let me know if there is something you are likely to want.

Our meetings in **June** will be **1st**, **15th** and **29th**. The meeting on 1st will be an in person meeting **only**. All other meetings will be on Zoom as well as in-person. Refreshments will be served at each meeting.

Contact: Tina Salmon (christinasalmon60@gmail.com 874481 website: <https://cliveandtina.co.uk>)

"Kind hearts are the gardens;
kind thoughts are the roots;
kind words are the flowers;
kind deeds are the fruits."

- English Proverb

Harlington Parish Council



Harlington Parish Council

Cllr Terry Culverhouse	7. Cllr Martin Waldron
Cllr John Harfield	8. Cllr Marcus McNamara
Cllr Pete Hughes	9. Cllr David Steel
Cllr Karen Saunders	10. VACANT
Cllr Mary Walsh	11. VACANT
Cllr Phillip Tomlinson	12. VACANT

PARISH CLERK/COUNCIL OFFICE

Alison Doyle 01525 875933 clerk@harlington-pc.gov.uk
Parish Office, Church Road, Harlington LU5 6LE

CENTRAL BEDFORDSHIRE COUNCILLORS

Cllr Mary Walsh Mary.Walsh@centralbedfordshire.gov.uk
Cllr Gary Purser Gary.Purser@centralbedfordshire.gov.uk

All Residents are invited to attend Council meetings:

9 th June 2026	Full Council Meeting	7.30pm
14 th July 2026	Full Council Meeting	7.30pm
28 th July 2026	Full Council Meeting	7.30pm

All meetings are held at the Parish Hall, Church Road, Harlington, LU5 6LE

News!

Tentative plans are being made for a Christmas lights switch on event, Saturday 21st November, more details will follow in due course. We need your help to make this a community event. If you run a group or organisation and would like to be involved, please let us know.

Looking for a venue to hire?

The Parish Hall is available for hire to residents and non-residents for regular or occasional bookings. If you are interested, please contact the Council Office on 01525 875933 or use the contact form on our website to check availability.

Stay up to date with local events

We run a Village Diary with information about events and regular classes. This is both a physical diary held in our office and online via our e-newsletter which is also sent out to subscribers. Please contact us if you have an event or class you would like to publicise.

Harlington Dog Show



SUNDAY 20TH SEPT
2026
10AM - 3PM
HARLINGTON FUN
DOG SHOW
DETAILS TO BE CONFIRMED!

@SCALEFEATHERSANDFUR

@DOGGYANDDWELLING



HARLINGTON VILLAGE
NEWGROUNDS PLAYING
FIELDS, LU5 6LS



Mark your calendars, get your sun cream, shorts, shirts, and water bottles (for the dogs). The Harlington Fun Dog Show is back for a second year ! Sunday 20th September 10am to 3pm for more information contact Becky Whittle or Becky Fildes at Harlingtondogshow@gmail.com

“A well-trained dog will make no attempt to share your lunch. He will just make you feel so guilty that you cannot enjoy it.”

Helen Thomson



Advertisement

Westoning Baptist Church

You are very welcome to join us for our services at the Church or online.



Sunday

Services 11am & 6pm
Sunday School
9.30am - 10.30am (term-time)



Tuesday

Bible Study/Prayer Meeting
7.15pm



Friday

Noah's Ark Toddlers Group
9am - 11am (term-time)
In 'Hope Hall'



Find out more



 Large free car park on site

 Zoom Meeting ID: 292 960 6969

 **Greenfield Road MK45 5JD**

 **westoningbaptistchurch.org**

Westoning Baptist Church *plus* Gardeners'

From Westoning Baptist Church

As the weather grows warmer, it's a pleasure to spend more time outdoors, whether that's in the garden, at the playground, or exploring the nearby countryside. As you look around, take a moment to wonder at the complexity of nature: the delicate beauty of a flower, the intricate structures within a single leaf, and the remarkable balance of our ecosystems. Animals,



birds, plants, and insects all live side by side, relying on one another for survival. Then consider your own body, how wonderfully the different organs work together to keep you alive, and the miracle that each of us began life as a single cell, which multiplied and grew into the person we are today.

In the Bible, King David speaks to God in Psalm 139, verse 14: ***I will praise thee; for I am fearfully and wonderfully made.*** At Westoning Baptist Church, we believe that all people are created by God, in his image, and that we will know true peace and happiness only when we recognise this and come to praise and worship him. Why not join us one Sunday to find out more about the God who created the world and everything in it, including you?

Harlington Gardeners' Society



We had a well attended Spring Social in the Village Hall on May 9th with a talk by George Lockwood on Perennial plants. The member supplied food was enjoyed by all with very little left over.

Our members' BBQ will take place on August 8th at 118 Goswell End Rd. We have had to increase the entrance fee this year to £10, due to the ever increasing cost of food.

We still have a few places on our annual coach outing this year to RHS Hyde Hall in Essex on 5th September with free entry for members. The cost of the coach is £35 per person.

Tony Roberts – HGS Secretary

LIFE Church and Lighthouse Café



LIFE CHURCH
HARLINGTON

www.life-church-harlington.com

Sunday services at 10.30 am in The Parish Rooms

Whether you have never been to church or you are a committed Christian,

EVERYONE IS WELCOME

June 2026

7th – John Doohan

14th – Dawn Charles

21st – Lighthouse Café Father's Day Special

28th – Dan and Rachel Harris



Wednesdays 7.15pm Prayer meeting on Zoom.

You can also contact us through our website if you have any prayer requests or would like to talk to someone .

We are good at saying thank you to our Mums, but maybe not so good at showing our appreciation to Dads and Father figures.

So let's show them they are special with a Breakfast BBQ.

There will be activities to keep the children busy too.



*Father's
Day*

Breakfast

BBQ



Harlington Parish Hall

21st June 10 – 11.30

Activities for kids

Breakfast for everyone!

Methodist Church *including* Bright Hour Fellowship

You are all invited to join us at any of our services. If you can't attend in person you can join us on Zoom or YouTube if you have access to the technology. You can also view the YouTube recording later if you wish.



JUNE preachers are:

- 7th 10 am “Come and See” led by Martin Wallis
6 pm Service of Holy Communion led by Rev. Claudia Lupi
- 14th 10 am Rev. Claudia Lupi. This service includes Holy Communion
- 21st 10 am Tina and Clive Salmon
- 28th 10 am Chris Berry

If you want to join us on Zoom, the Zoom link is normally sent out the day before. Email me, clivedsalmon@aol.com, or phone 874481 to be added to the Zoom email list, or if you would like our printed service emailed to you.

COFFEE MORNING 27th June 2026, from 10 am to 12 noon, in our hall. Proceeds this year go to our charity for the year, the Paynter Home in Nuwara Eliya, Sri Lanka.

BRIGHT HOUR FELLOWSHIP

The Bright Hour Fellowship meets on Thursday afternoons at 2.45pm at the Methodist church Hall each week (except where shown below). Members have opportunity to hear from a variety of invited speakers, share in the company of others and enjoy a nice cup of tea. Why not join us? New members are always made very welcome. We look forward to seeing you.

Speakers for **June 2026** are:

- 4th - Tea Party at Jo Golby's (leaving 2pm for 2.30pm)
11th - Alan and Christine Parfit
18th - Sue Blain
25th - Rev. Claudia Lupi



ROOM BOOKINGS

Contact Trevor Caveney if you are interested in booking any of our Halls, Rooms or the Church. The Halls are suitable for meetings, groups, clubs and particularly good for children's parties. Reasonable prices. Tel 01525 754527 or t315485@gmail.com

St Mary's Churchwarden

St Mary's Church



Bunyan 400: In 2028 there will be celebrations across the country to celebrate the 400th anniversary of the birth of John Bunyan who wrote 'The Pilgrims Progress'. We hope to organise at least one event to celebrate this special anniversary. There are several points of interest in Harlington connected to Bunyan, and in May we were visited by 30 people from the Netherlands who wanted to see the Bunyan altar in the church and the window dedicated to him. Why the interest? Dutch translations of The Pilgrim's Progress were among the earliest completed. They became immensely popular and influenced Dutch Puritanism.

Art Exhibition: 'Echo From The Void' **June 4th, 5th, 6th and 7th** in the church, with free entry. Thursday 4th, Friday 5th open 1 -5pm. Saturday 6th, Sunday 7th 10.30am -3pm, with an artist's talk on Saturday at 2pm. Stanley Greening, a talented professional artist, will be exhibiting his latest work. Contact admin@harlingtonchurch.org for more information. Paintings will be on sale and refreshments available.

Messy Church: **Sunday 14th June** is our next relaxed family celebration in the Parish Hall from 9am, with breakfast, stories, song and crafts.

Midsummer Dinner: Saturday 20th June at 7pm. Tickets £20, numbers limited. Book via admin@harlingtonchurch.org or for more information.

Churchyard: it's great that the Lady's Bedstraw flowers and bee orchids are reappearing in the unmown area of grass in the churchyard, plus, for the first time, a Cuckooflower (commonly called Lady's Smock). Long ago, Lady's Smock was said to be sacred to the fairies and bringing it into the house brought bad luck. Do you know why fairies don't live under toadstools?.....Because there's not mushroom!

St Mary's Friends Group: if you'd like to be a supporter of the church building and churchyard, why not join our Friends Group? Contact us via admin@harlingtonchurch.org.

For service and event information, see Contact, the noticeboard outside church or our website: www.harlingtonchurch.org. The website also has photos of recent events and information on upcoming events.

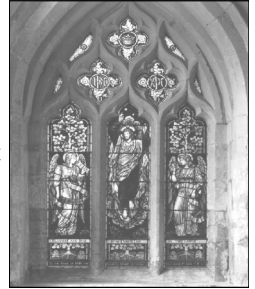
If you'd like to speak to someone about a life event or for prayer, please contact revmarkedwards@outlook.com, or our Lay Reader Robert, robert@harlingtonchurch.org. You can also contact myself or fellow Churchwarden Neil.

Best wishes, Tricia Churchwarden

St. Mary's Church Services

Everyone is welcome to attend Sunday services in our beautiful village church. No special services in June, but a very special service on 5th. July when the churches of the Benefice join together at Tingrith for Rev. Steve Farmer's first holy communion service after his ordination as a priest on 4th. July at St. Albans Abbey. Our **June** services are:

- 7th 9.30 am Morning Praise
14th 9 am Messy Church (Parish Hall)
9.30 am Holy Communion
21st 9.30 am Holy Communion
28th 9.30 am Holy Communion



Wednesdays

Every Wednesday 10 am Holy Communion or Morning Prayer

Other times

The church can be made available for private prayer by arrangement, please contact one of the church wardens, Tricia Murphy tricia.murphy5@ntlworld.com or Neil Walter neil@harlingtonchurch.org, or the Church Reader Dr. Robert Johns robert@harlingtonchurch.org. Alternatively email admin@harlingtonchurch.org.

For personal enquiries, for requests for prayer, or for enquiries about baptisms, weddings or funerals please contact Fr. Mark Edwards revmarkedwards@outlook.com 07305 822186 or Dr. Robert Johns robert@harlingtonchurch.org 01525 873214.

Further information and useful links

The church noticeboard is kept regularly up-to-date as is the church website which is at <https://www.harlingtonchurch.org>

The church Facebook page is: www.facebook.com/stmarysharlington/
A Church Near You at <https://www.achurchnearyou.com/church/7667/>

Remember that we are here for you.

Fr Mark Edwards, Dr Robert Johns (Reader), Tricia Murphy and Neil Walter (Church Wardens)

"Spring being a tough act to follow,
God created June."

- Al Bernstein

Advertisements

YOUR LOCAL FITTED KITCHEN & BEDROOM SPECIALISTS



**FREE HOME DESIGN SERVICE
EXPERT INSTALLATION**



Showroom:
Inside The Olde Watermill Shopping Village
Barton-Le-Clay, MK45 4RF Tel: 01582 882020

The
Kitchen & Bedroom
STUDIO

www.kitchenbedroom.studio



Your local builder for over 30 years

All aspects of building work undertaken including:

- Extensions
- Kitchens
- Landscaping
- Conversions
- Bathrooms
- Tiling
- Paving
- Loft Conversions
- Carpentry
- Maintenance
- Fencing
- Decorating

Please contact us for a free quotation

Tel: 01582 594766

Email: whitefensome@aol.com

Advertisements



BlueSky Gardens

Fencing - Patios - Turfing
Decking - Planting
Garden Design
Garden Maintenance

Based in Harlington
Call Jack for a free quotation!

07910838810
blueskygardens2017@yahoo.com

www.the-doghouse.uk



the **DOG** house grooming salon

- Bespoke and personalised
- Specialising in S-M sized dogs
- OCN 3 Dog Grooming Diploma
- Fully insured
- Trained in canine first aid
- State of the art equipment
- Professional salon products

 07725 051381 



James

Plumbing & Heating

Local, reliable and quality service

-  Boiler servicing
-  Landlord Certificates
-  Boiler and central heating installation
-  Heating breakdowns
-  Heating and boiler upgrades
-  Radiator replacement or relocation
-  General plumbing work

Call for a free no obligation quote.

Mob: 07970 275358

Tel: 01582 882245

Email: danieljames5@outlook.com




Rells

NAILS

New Business
in Harlington
Home Salon

*Book your appointment and treat yourself
to beautiful nails!*

- Gel Polish
- Builder Gel
- Acrygel / Polygel

— Open on —
Tuesdays & Sundays
9:00 to 13:00

— Scan to follow us on Facebook: —
facebook.com/reelsnails





Village Diary

June

1 st	Crafternoon Tea	Methodist Church Hall 2 – 4 pm (not Zoom)
2 nd	Flittabus MK	Station Road bus stop 9.15 am
4 th	Art Exhibition	St. Mary's Church 1 pm – 5 pm
5 th	Art Exhibition	St. Mary's Church 1 pm – 5 pm
6 th	Art Exhibition	St. Mary's Church 10.30 am – 3 pm
6 th	History	St. Mary's Parish Church LUTON
7 th	Art Exhibition	St. Mary's Church 10.30 am – 3 pm
9 th	Wildlife walk	Pegsdon Hills Nature Reserve 7 pm
9 th	Parish Council	Parish Hall 7.30 pm
11 th	Mini Lighthouse	Parish Hall 9.30 – 11 am
14 th	Messy Breakfast	Parish Hall 9 am
15 th	Crafternoon Tea	Methodist Church Hall 2 – 4 pm (plus Zoom)
18 th	Tree walk	Flitwick Manor Park 7 pm
20 th	Messy Church	Methodist Church and Halls 4 pm
20 th	Midsummer Dinner	St. Mary's Church 7 pm
21 st	Father's Day Breakfast	Parish Hall 10 – 11.30 am
25 th	Mini Lighthouse	Parish Hall 9.30 – 11 am
27 th	Summer Fayre	Harlington Lower School 11 am - 2 pm
27 th	Coffee Morning	Methodist Church Hall 10 am – 12 noon
29 th	Crafternoon Tea	Methodist Church Hall 2 – 4 pm (plus Zoom)

July

7 th	Flittabus MK	Station Road bus stop 9.15 am
9 th	Mini Lighthouse	Parish Hall 9.30 – 11 am
11 th	HP Showcase	Harlington Village Hall 2.30 pm and 7.30 pm
13 th	Crafternoon Tea	Methodist Church Hall 2 – 4 pm (plus Zoom)
14 th	Parish Council	Parish Hall 7.30 pm
18 th	HiB weeding/pruning	Village Hall Car Park 10 am
18 th	Messy Church	Methodist Church and Halls 4 pm
25 th	Coffee Morning	Methodist Church Hall 10 am – 12 noon
27 th	Crafternoon Tea	Methodist Church Hall 2 – 4 pm (not Zoom)
28 th	Parish Council	Parish Hall 7.30 pm

Don't forget the regular weekly things that aren't shown here such as the Wednesday Coffee and the Wellbeing Walks, not to mention the regular church services.

You can send things just to be entered here.

GET YOUR JULY 2026 DATES TO THE MAGAZINE BY 10TH JUNE 2026